



Anthony Fokkerweg 4
 3351 NL Papendrecht
 P.O. Box 1
 3350 AA Papendrecht
 The Netherlands
 www.fokker.com

Title : **Delivery Instructions for Fokker Elmo Suppliers worldwide**

Controlled : Fokker Elmo Supply Chain Management
Copy : <https://www.gknaerospace.com/en/Utilities/gkn-aerospace-suppliers/fokker/>

Issue date: Feb. 7, 2025
 Issue number: 21.4
 Report number: PROC17-003
 Order number: n/a
 Security class: **Unclassified**
 Company / dept. : Fokker Elmo

Delivery Instructions

Summary

This document describes the required transport processes, shipping documents, incoterms and point of contacts when shipping material to all sites of GKN Fokker Elmo worldwide.

In case of questions, comments or remarks about the instruction/requirements listed in this document, or to submit exceptions for Fokker Elmo approval, please contact:

Email: Patrick.lankhorst@fokker.com
 Phone: +31 (0) 6 510 012 41

General remarks

- The delivery instructions in this document are applicable to all suppliers in receipt of a purchase order from Fokker Elmo and its subsidiaries.
- All instructions in this document are to be read as requirements (be)for(e) shipping and apply to all shipments made to Fokker Elmo and its subsidiaries, for which Fokker Elmo is responsible for the freight charges.
- Compliance to these Delivery Instructions is mandatory.
- Prepaid freight charges billed to Fokker Elmo are not accepted, unless otherwise agreed in writing between Fokker Elmo and Supplier.
- Supplier shall not insure shipments at the expenses of Fokker Elmo.

This document is subject of change. The latest revision shall be made available electronically on the company website <https://www.gknaerospace.com/en/Utilities/gkn-aerospace-suppliers/fokker/>
 Printed versions of this document are for reference only. It is therefore the responsibility of the person using this document to compare the issue date of the printed copy with the electronic issue on the company website.

Delivery Instructions for Fokker Elmo Suppliers Worldwide

prepared/department: Fokker Elmo SCM: [Signature on File]	checked/department: Quality Assurance : [Signature on File]
original issue date:	approved/department: Director SCM: [Signature on File]

Change Record:

Issue	Date	Description of changes
01	N/A	Initial issue.
02	N/A	3.1 Packing List: Added: Number of items per batch code or date code need to be provided.
03	N/A	The following changes are added by DB Schenker: <ul style="list-style-type: none"> - Address Change for LAX - Los Angeles - Contact Person Changed: for the USA Key Account Support.
04		Added: Contact details for Fokker Elmo India (Joint Venture with SASMOS).
04	Jun. 29, 2015	Issue update for supplier
06	Mar. 31, 2017	General Lay-out update. General changed: all Fokker Elmo email addresses, from domain 'fokkerelmo.com' into 'fokker.com'. E-mail address Fokker Elmo – Sasmos India, Fokker Elmo Turkey changed. Global transport process owner changed. VOI / consignment stock program process added requirements for packing list. CoC OEM requirements in case of distributor delivery added.
07	Feb. 16, 2018	CoC requirements moved to SQAR, see website https://www.gknaerospace.com/en/Utilities/gkn-aerospace-suppliers/fokker/ PoC adjustments URL references Instructions for European suppliers under FCA(supplier) for deliveries to Fokker Elmo NL
08	Oct. 15, 2018	Update addresses E-mail addresses for pre-alerts at direct shipments to FE-CN and FE-TR Correction direct shipments to FE-NL ex UK
09	Apr. 15, 2019	Name Gateway is changed into Tradeshift (whole document) Instruction Tradeshift Shipments (Page 8) E-mail addresses for invoices (shipping pages) Add facility Pune India (shipping pages) Decision matrix for shipping raw material (page 10)
10	Jan. 10, 2020	Text <ul style="list-style-type: none"> - 3.1.7 Export Controlled Shipments - Fedex is changed into TNT/Fedex - Address change for Direct Shipments to China (Page 20/21) - Shipment process added for Origin Fort Worth Dallas, USA (page 20) - Remove FE-SIL (Fokker Elmo Sasmos Bangalore IN). FE-SIL has introduced separate instructions. Instructions for all other GKN Fokker Elmo facilities remain the same, including Fokker Elmo Pune India. New: Add Ireland in chapter 4.8 Add exception for direct shipments to TR not with Fedex! 4.3 Shipping from Miami: Change forwarder
11	Dec. 20, 2021	Changed p.o.c. Changed VAT number
12	Jul. 1, 2022	Changed POC Direct shipments to GKN Fokker India FE-IN 3.1.5
13	Sep. 1, 2022	Delivery address DB Schenker Seattle 4.4, page 16
14	Jan. 15, 2023	PoC Lax, page 14 e-mail address and PoC DB Schenker Amsterdam, page 18 PoC DBS India, page 20
15	Mar. 14, 2023	From 01 March 2023, the European Union (EU) will implement the Release 2 of its new "Import Control System" (ICS2), resulting in Pre-Loading Advance Cargo

		Information (PLACI) requirements for all cargo carried to or via EU Member States. Page 6 (EORI number = required) Change Fokker Elmo BV VAT number Page 6 Various PoC
16	Jul. 18, 2023	Exporter of record for European goods to TR and IN, see 4.6.1, page 19 Various PoC Template SHPE number page 7 Hazardous Material Hub AMS page 18
17	Dec. 1, 2023	Change address of GKN Fokker Netherlands Various PoC
18	Dec. 12, 2023	Zipcode Papendrecht adjusted into 3351 NL Various PoC
19	N/A	Various PoC, Tax ID FE-CN China
20	May 31, 2024	New Points for supplier's, needs to follow. Points: 2.2 , 3.1.2, 3.2.1 & ZIPCODE of INDIA. Added Fokker Elmo Mexico to the delivery instructions
21	Oct. 8, 2024	Contact update, update Fokker Elmo Mexico delivery instructions + various minor updates
22	Dec. 20, 2024	Change of address of DB Schenker JFK warehouse as per January 6, 2025
23	Jan. 6, 2025	Address JFK warehouse updated
24	Feb. 5, 2025	Ship to address from the East side of the U.S. to Mexico updated (4.1). Ship to address from the Miami region to Mexico updated (4.3). Ship to address from the Seattle region to Mexico updated (4.4). Ship to address from the Canada region to Mexico updated (4.5). Issue date format updated. Layout of this changelog updated. Table of content page numbering updated.
25	Feb. 7, 2025	Shipper locations for shipments to India and Mexico updated to West USA (4.2) Shipper locations for shipments to India and Mexico updated to MIA (4.3) Shipper locations for shipments to India and Mexico updated to SEA (4.4)



Delivery Instructions for Fokker Elmo Suppliers Worldwide

Table of content

General remarks	1
1 Introduction	5
2 Fokker Elmo shipments – Required shipping documents	5
3 Fokker Elmo Shipments - Shipping Procedure	10
3.1 General requirements:	10
4 Fokker Elmo Shipping Instructions for Suppliers	14
4.1 Ship from: East side of the United States of America.....	14
4.2 Ship from: West side of the United States of America.....	15
4.3 Ship from: Miami Region (MIA).....	16
4.4 Ship from: Seattle Region (SEA)	17
4.5 Ship from: Canada Region	18
4.6 Ship from: Europe Region, except from Great Britain	19
4.6.1 Exporter of Record for goods to Fokker Elmo Turkeye and India.....	20
4.7 Ship from: Great Britain Region.....	21
4.8 Ship from: India.....	22
4.9 Ship from: Origins, not mentioned in 4.1 - 4.8	23
5 Aircraft on ground (AOG) Express shipments.....	24
6 Communication matrix for Global Transport	25



Delivery Instructions for Fokker Elmo Suppliers Worldwide

1 INTRODUCTION


This document describes all documents necessary to ensure that shipping to Fokker Elmo is executed correct and complete. As requirements vary per geographic location,

2 FOKKER ELMO SHIPMENTS – REQUIRED SHIPPING DOCUMENTS

- Certificate of Compliance see column 2.1
- Invoice, See column 2.2
- Packing List, see column 2.3
- Shipping Letter of Instruction, see 2.4
- Tradeshift Shipment Manifest.

Required Documents	2.1 Certificate of Conformance (CoC)	
How to be delivered with shipment	Certificate of Conformance (COC) is required to be packed in the specific box	
How to be delivered separate from shipment	Not applicable	
Content	SQAR; (Supplier Quality Assurance Requirements), see URL: http://www.gkngroup.com/aerospace/supplier-info/fokker-elmo/documents/supplier quality assurance requirements rev7.pdf	

Delivery Instructions for Fokker Elmo Suppliers Worldwide

Required Documents	2.2 Invoice	2.3 Packing List
How to be delivered with shipment	<p>Two (2) Printed copies of the invoices in a pouch (pouch should be labelled as DBS) for the purpose of DBS & one (1) invoice copy in another pouch (Pouch should label as GKN) for the purpose of GKN.</p> <div style="text-align: center;">  </div>	<p>One (1) Packing list <u>in</u> the box, One (1) Packing list (in the document pouch) must be included and affixed <u>on the EXTERIOR</u> of the box(es).</p>
How to be delivered separate from shipment	<p>Send the invoices to the "Bill to" address by email (=preferred) or by normal mail. See Shipping instructions for addresses.</p>	Not applicable
Content	<p>The elements below must be stated clearly and completely:</p> <ul style="list-style-type: none"> - Name and/or logo of supplier - Invoice number and date - Date of shipment - Fokker Elmo Purchase Order number 1) - Fokker Elmo Purchase Order Line number 2) <p>Fokker Elmo is not able to trace goods without a Line number!</p> <ul style="list-style-type: none"> - Fokker Elmo item number(s) of that purchase order - Part number/item number of supplier - Quantity per item (with unit of measurement) <p>3)</p> <ul style="list-style-type: none"> - "Confirmed" price per item (including currency) - Total amount (including currency; Quantity x Price per item number - VAT percentage(s) (separately) - VAT amount(s) (separately) - HS (Harmonized System) code - ECCN code - Country of Origin - EORI Number of the consignee for deliveries to EUR (EORI FE-NL = NL863223084) 	<ul style="list-style-type: none"> - Correct Fokker Elmo Address - Purchase Order Number - Purchase Order Line Number. Fokker Elmo is not able to trace goods without a Line number! - Fokker Elmo Item Number(s) - Supplier part number(s) of that purchase order - Quantity per Item - Unit of measurement (UoM) - Production batch number or date code - the delivered quantity per batch number or date code - HS (Harmonized System) code - ECCN code - Country of Origin - EORI Number of the consignee for deliveries to EUR (EORI FE-NL = NL863223084)
Remark 1	<p>1) Do not refer to more than one purchase order number on each invoice. 2) The purchase order line number must be placed separately from the purchase order number. For example 12345-10 is incorrect; the correct way is 12345 line 10. 3) The unit of measurement must be the same as the measurement reflected on the Fokker Elmo Purchase Order.</p>	<p>Be sure that the goods and quantities on the packing list(s) are matching with the content of the physical shipment AND the (commercial) invoice. Accuracy between CoC and physical parts must be 100%. Deviations will lead into wrong declarations with required scrap as result.</p>
Remark 2	<p>Be sure that the goods and quantities on invoice(s) are matching with the content of the physical shipment. Accuracy between CoC and physical parts must be 100%. Deviations will lead into wrong declarations with required scrap as result.</p>	<p>Be sure that the goods and quantities on the packing list(s) are matching with the content of the physical shipment AND the (commercial) invoice. Accuracy between CoC and physical parts must be 100%. Deviations will lead into wrong declarations with required scrap as result.</p>



Remark 3	In case of a credit note refer to the concerned Purchase Order and line number and the original invoice number. Also state the Fokker Elmo NCR number if applicable. Fokker Elmo item number; the OEM number and Quantity	In case of shipments in accordance with the VOI/Consignment stock program, mention the VOI contract number as reference on the packing list.
----------	---	--

Delivery Instructions for Fokker Elmo Suppliers Worldwide

Required Documents	2.4 Shipping Letter of Instructions (SLI)	2.5 Tradeshift Shipment Manifest (Applicable for Tradeshift users only)
How to be delivered with shipment	Send SLI to the related DB Schenker Hub. In case the seller delivers under FCA (Hub DB Schenker), the shipping and tracking information of the related forwarder has to be filled out on the SLI (Inland carrier Name and tracking or PRO nr.)	One (1) Tradeshift Shipment Manifest, must be included in the document pouch and affixed on the EXTERIOR of the box(es). See instruction 2.5.1.
How to be delivered separate from shipment	Not applicable	Not applicable
Content	Use template provided by DB Schenker - Shipper - Dimensions shipment (Weight/volume) (Accuracy Weight/Volume must be 100%!) - Final Fokker Elmo destination - Shipper's reference no - Description goods - Number of shipping units / boxes - In case of FCA(Hub) the track & trace information of the related carrier	Shipment manifest is prepared and printed on Tradeshift and contains the following information: - Final Fokker Elmo Destination - Applicable pick-up address of vendor - number of packages/volume and weight - Purchase Order number - Purchase Order Line number - Fokker Elmo's item number(s) - Supplier part number(s) of that purchase order - Shipped Quantity per item - Unit of measurement (UoM)
Remark 1	DIRECT SHIPMENTS to the Fokker Elmo destinations are NOT allowed. Exceptions: 1. Only after approval of Fokker Elmo Procurement Department / Supply Chain Management 2. Deliveries DDU (Papendrecht), DAP (Papendrecht) or FCA(Papendrecht) Costs caused by unapproved direct shipments will be claimed!	Be sure that the goods and quantities on the packing list(s) / commercial invoice and Tradeshift Shipment Manifest are matching with the content of the physical shipment
Remark 2	From logistic perspective it is not allowed to consolidate multiple boxes with different final destinations into one box or shipment. An SLI is required per final destination. "Mixed" shipments will be returned to consigner, on account of the supplier, for repacking.	Every shipment prepared on Tradeshift receives a unique SHPE number . Mark all separate packages which belong to one SHPEXXXXXX-number with this number.

Delivery Instructions for Fokker Elmo Suppliers Worldwide

2.5.1 Instruction for completing a Tradeshift shipment with DB Schenker



Print out the Shipment manifest/ complete the SLI and print your packingslip and invoices
 Combine above documents in a document pouch and put outside of the parcel
 Mark every individual package with the referring SHPnumber



Delivery Instructions for Fokker Elmo Suppliers Worldwide

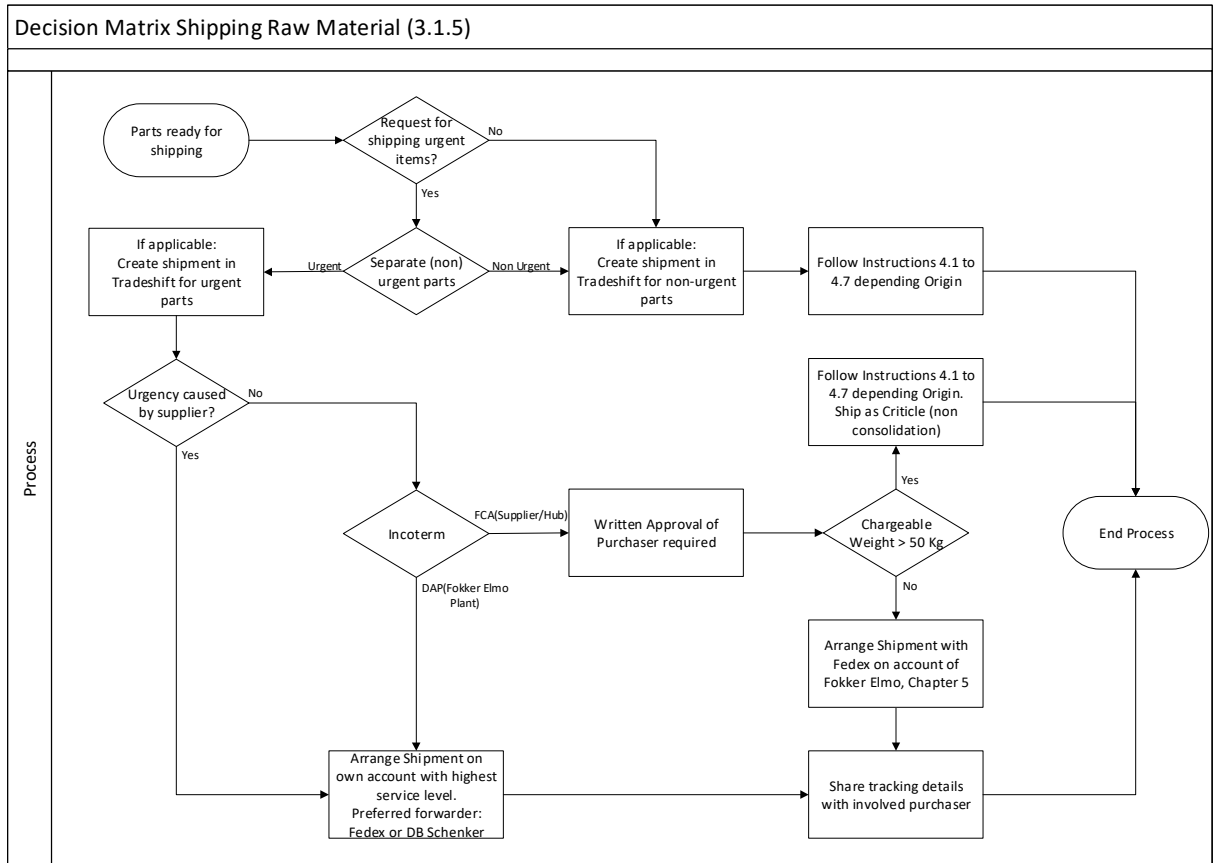
3 FOKKER ELMO SHIPMENTS - SHIPPING PROCEDURE

3.1 General requirements:

Process:	Requirements and descriptions
3.1.1. Packaging	<ol style="list-style-type: none"> Vendors shall package products in a way that provides protection from damage and corrosion during transport, so that the goods arrive at Fokker Elmo destinations in the same condition as when they were packaged. Miscellaneous small parts have to be packed in a box. Jiffy bags are prohibited to ship material to Fokker Elmo. Each package unit has to wear a label containing the following information: <ol style="list-style-type: none"> Purchase Order number Purchase Order Line number Fokker Elmo item number Delivered Quantity Unit of Measurement (UoM) Production Batch number or Date Code Products delivered with multiple date codes, covering the PO demand, need to be packed/grouped separately per date code/Batch.
3.1.2. Prepare Shipment	<ol style="list-style-type: none"> Put 1 packing list inside the box Affix document in 2 pouches on the exterior of the box. Content of pouch: <ol style="list-style-type: none"> 2 copies of invoices & 1 packing list/COC in the 1st document pouch (POUCH must labelled as DBS) 1 copy of invoice & 1 packing list/COC in the 2nd document pouch (POUCH must labelled as GKN) Label the boxes with the final destination. (not only on docs in the pouch. Fixed label on the box is required to avoid mix-up for multiple destinations). PO + PO-line number is clearly mentioned on all documents. It is not able to trace shipments without line number Each shipping unit (box, pallet, container etc.) contains Purchase Orders with the same final destination only. <u>Do not ship parts or boxes with various final destinations into one shipment!</u> Send Shipping letter of Instructions (SLI) to the applicable DB Schenker Hub. The content of the shipment has to be the same as manifested on the packing lists and invoices for 100%.
3.1.3. Exceptions (tooling; equipment; consumables etc)	<p>Customs Regulations related to shipping of Non Product Related Spend or otherwise (f.e. tooling and or equipment)</p> <p>For final destination:</p> <p><u>FE-TR:</u> Separate package, allowed to consolidate</p> <p><u>FE-CN:</u> Separate shipment/HAWB, <u>not allowed in consolidation together with production related material!</u> Reference PO#: FE-CN-xxxx-xxxx-x (=PO for consumables and tooling)</p> <p><u>FE-NL:</u> no restrictions</p> <p><u>FE-SIL:</u> Fokker Intercompany material need to be shipped by a separate HAWB, due to Export Oriented Unit (EOU)</p> <p><u>FE-IN:</u> Fokker Intercompany material need to be shipped by a separate HAWB, due to Export Oriented Unit (EOU)</p> <p><u>FE-MX</u> Reference PO#: 92XXXXX(=PO for consumables and tooling) Separate shipment/HAWB, <u>not allowed in consolidation together with production related material!</u></p>

3.1.4. Hazardous Material	<i>Follow all applicable state-and federal mandates for shipping hazardous material. Shipping units must be labelled according to regulations. Hazardous Material have to be shipped separately.</i>

Process:	Requirements and descriptions
3.1.5. Direct Single Shipments	<p><i>In principle, DIRECT SHIPMENTS to the Fokker Elmo destinations are NOT allowed. Exceptions: (See decision matrix below)</i></p> <ol style="list-style-type: none"> <i>1. European suppliers with deliveries to Fokker Elmo Netherlands, under FCA(Supplier).</i> <i>2. Deliveries under DDU(Papendrecht); DAP(Papendrecht); FCA(Papendrecht)</i> <i>3. Deliveries DAP(Langfang) or DDU(Langfang) For direct shipments to Langfang; send pre-alert to FE-CN to fe-cn.pur@fokker.com.</i> <i>4. Deliveries DAP(Izmir) or DDU(Izmir); send pre-alert to FE-TR to purchase.tr@fokker.com</i> <i>5. Deliveries DAP(Pune) or DDU(Pune) For direct shipments to Pune; send pre-alert to FE-IN to pune.import@fokker.com.</i> <i>6. Others after approval of Fokker Elmo SCM Department or Transport Management.</i> <i>7. Deliveries DAP(US Agent at El Paso) or DDU(US Agent at El Paso) For direct shipments to Chihuahua; send pre-alert of FE-MX to Diana.vega@mx.fokker.com</i> <p><i>At Direct Shipments: label shipments as described on page AOG/Express shipments.</i></p> <p><i>Costs caused by unapproved direct shipments will be claimed! See also decision matrix Shipping Raw Material underneath</i></p>
3.1.6. AOG (Critical or Express) shipments	<i>For AOG; Critical; Express shipments on the account of Fokker Elmo, a written approval from Fokker Elmo is required!</i>
3.1.7. Export Controlled Shipments	<p><i>If export controlled shipments require an export license, please be aware that local branches of Schenker might be used. They need to be added to the export licenses as intermediate consignees or foreign freight forwarders. Fokker Elmo sites concerned can provide the details as required.</i></p> <p><i>In case details are known of DB Schenker BV (NL) or Schenker Arkas (TR) it can be added to the text.</i></p>



3.2 Shipping

Process:	FCA(Supplier Premises)
3.2.1. Pick-Up request	<p>Contact one of the appointed DB Schenker Hub nearest to your facility to arrange pick-ups & while communication for pick-up, add respective GKN facility persons in loop i.e. Respective facility's IMPEX & Buyers in loop so that further GKN team will take follow up for pickup status(see chapter 4. Shipping Instructions)</p> <p>Consolidate daily shipments to avoid multiple pick-up requests on one day.</p> <p>Specific for European Suppliers for deliveries to Fokker Elmo Netherlands only: Request Pick-up at Fedex, see 4.6 and 4.7</p>

Process:	FCA(Hub DB Schenker) - DDU(Hub DB Schenker) – DAP(Hub DB Schenker)
3.2.2. Deliveries	<p>Deliver your products to the applicable delivery address (DB Schenker Hub) in accordance with the data on the pages for Shipping Instructions in Chapter 4.</p> <p>Provide tracking# to the related hub (see POC Hub)</p> <p>The shipping and tracking information of the related forwarder has to be filled out on the SLI.</p>

Process:	DDU(Papendrecht) – DAP(Papendrecht) – FCA(Papendrecht)
3.2.3. Deliveries	<p>Deliver your products to the applicable delivery address in accordance with the data on the pages for Shipping Instructions Chapter 4.</p> <p>Provide tracking# to the Fokker Elmo destination (see inbound department POC FE)</p> <p>The shipping and tracking information of the related forwarder has to be filled out on the SLI.</p>



Delivery Instructions for Fokker Elmo Suppliers Worldwide

4 FOKKER ELMO SHIPPING INSTRUCTIONS FOR SUPPLIERS

4.1 Ship from: East side of the United States of America

Origin	Supplier Location	Final Dest./ Incoterm	Bill to address	Ship to Address
USA	East USA	FE-NL Incoterm: all	GKN Fokker Elmo B.V. (Attn. Finance Department) PO Box 1 3350 AA Papendrecht The Netherlands	GKN Fokker Elmo B.V. Netherlands c/o Schenker Inc./ MRZ Trucking Corp. Prologis JFK Logistics Center-Bldg B 230-39 International Airport Center Blvd. Springfield Gardens, NY 11413 +1 718 244 8914
		Email to:	invoices.fenl@fokker.com	
		VAT/EORI	VAT Nr: NL863223084B01 – EORI Nr NL863223084	
USA	East USA	FE-CN Incoterm: all	GKN Fokker Elmo B.V. (Attn. Finance Department) PO Box 1 3350 AA Papendrecht The Netherlands	GKN Fokker Elmo China Co. Ltd. c/o Schenker Inc./ MRZ Trucking Corp. Prologis JFK Logistics Center-Bldg B 230-39 International Airport Center Blvd. Springfield Gardens, NY 11413 +1 718 244 8914
		Email to:	invoices.fecn@fokker.com	
		Tax ID:	911310006013551068	
		Notes:	Use plastic or "treated" (IPPC) pallets for all cargo with final destination FE-CN. For more information ask your POC at FE.	
USA	East USA	FE-TR Incoterm: all	Fokker Elmo Havacılık Sanayi ve Ticaret Limited Sirketi Allowed abbreviation: Fokker Elmo Hav.San.ve Tic.Ltd.Sti Ege Serbest Bölgesi, Sadi Sokak No: 10 35410 Gaziemir – Izmir Turkey	Fokker Elmo Hav.San.ve Tic.Ltd.Sti Aegean Free Zone, Turkey c/o Schenker Inc./ MRZ Trucking Corp. Prologis JFK Logistics Center-Bldg B 230-39 International Airport Center Blvd. Springfield Gardens, NY 11413 +1 718 244 8914
		E-mail to:	invoices.fetr@fokker.com	
		Tax ID:	388 059 2095	
		Notes:	<ul style="list-style-type: none"> - Always provide (Commercial) Invoice. For custom purposes a pro-forma invoice is NOT allowed. - Turkey has very strict custom regulations. Even a typing error can result into a blocked shipment. Please be very accurate with preparing the documentation. 	
USA	East USA	FE-IN Incoterms: all	GKN Fokker Elmo India Pvt. Ltd Block G, Embassy Industrial Park, Plot no.A-79 MIDC Chakan Industrial Area, Phase II Pune, Maharashtra, 410501 India	GKN Fokker Elmo India Pvt. Ltd. Pune c/o Schenker Inc./ MRZ Trucking Corp. Prologis JFK Logistics Center-Bldg B 230-39 International Airport Center Blvd. Springfield Gardens, NY 11413+1 718 244 8914
		Email to:	Invoices.FEIN@fokker.com	
		Tax ID#	27AAHCG5063B1ZU	
		Notes:		
USA	East USA	FE-MX Incoterms: all	GKN Fokker Elmo B.V. (Attn. Finance Department) PO Box 1 3350 AA Papendrecht The Netherlands	Rio Bravo International Service Freight Forward Company 12035 Rojas Dr. Suite F El Paso, TX. 79936 Diana Vega Diana.vega@mx.fokker.com +52 614 260 6043 Warehouse contact information Fernando Rico frico@aiiq.com +1 (915) 860-0701 x 4611
		Email to:	Invoices.femx@fokker.com	
		Tax ID#	VAT Nr: NL863223084B01 – EORI Nr NL863223084	
		Notes:		
USA	East USA	POC-HUB	POC DB Schenker HUB JFK: 1. Daria Delia Tel: +1 347 535 8327 Daria.delia@dbschenker.com 2. Jacqueline Devivo Tel: +1 347 535 8322 jacqueline.devivo@dbschenker.com	USA Key Account Support: Local Account Manager Arturo Gamez Tel: +1 305 439 8298 Arturo.gamez@dbschenker.com



Delivery Instructions for Fokker Elmo Suppliers Worldwide

4.2 Ship from: West side of the United States of America

Origin	Supplier Location	Final Dest./ Incoterm	Bill to address	Ship to Address
USA	West USA	FE-NL Incoterm: all	GKN Fokker Elmo B.V. (Attn. Finance Department) PO Box 1 3350 AA Papendrecht The Netherlands	GKN Fokker Elmo B.V. Netherlands c/o DBSchenker Inc. 990 East 233rd Street Carson CA 90745
		Email to:	invoices.fenl@fokker.com	
		VAT/EORI	VAT Nr. NL863223084B01 – EORI Nr NL863223084	
USA	West USA	FE-CN Incoterm: all	GKN Fokker Elmo B.V. (Attn. Finance Department) PO Box 1 3350 AA Papendrecht The Netherlands	GKN Fokker Elmo China Co.Ltd. c/o DBSchenker Inc. 990 East 233rd Street Carson CA 90745
		Email to:	invoices.fecn@fokker.com	
		Tax ID:	911310006013551068	
		Notes:	Use plastic or "treated" (IPPC) pallets for all cargo with final destination FE-CN. For more information ask your POC at FE.	
USA	West USA	FE-TR Incoterm: all	Fokker Elmo Havacilik Sanayi ve Ticaret Limited Sirketi Allowed abbreviation: Fokker Elmo Hav.San.ve Tic.Ltd.Sti Ege Serbest Bölgesi, Sadi Sokak No: 10 35410 Gaziemir – Izmir Turkey	Fokker Elmo Hav.San.ve Tic.Ltd.Sti Aegean Free Zone, Turkey c/o DBSchenker Inc. 990 East 233rd Street Carson CA 90745
		E-mail to:	invoices.fetr@fokker.com	
		Tax ID:	388 059 2095	
		Notes:	<ul style="list-style-type: none"> - Always provide (Commercial) Invoice. For custom purposes a pro-forma invoice is NOT allowed. - Turkey has very strict custom regulations. Even a typing error can result into a blocked shipment. Please be very accurate with preparing the documentation. 	
USA	West USA	FE-IN Incoterms: all	GKN Fokker Elmo India Pvt. Ltd Block G, Embassy Industrial Park, Plot no.A-79 MIDC Chakan Industrial Area, Phase II Pune, Maharashtra, 410501 India	GKN Fokker Elmo India Pvt. Ltd. Pune c/o DBSchenker Inc. 990 East 233rd Street Carson CA 90745
		Email to:	Invoices.FEIN@fokker.com	
		Tax ID#	27AAHCG5063B1ZU	
		Notes:		
USA	West USA	FE-MX Incoterms: all	GKN Fokker Elmo B.V. (Attn. Finance Department) PO Box 1 3350 AA Papendrecht The Netherlands	Rio Bravo International Service Freight Forward Company 12035 Rojas Dr. Suite F El Paso, TX. 79936 Diana Vega Diana.vega@mx.fokker.com +52 614 260 6043 Warehouse contact information Fernando Rico frico@aiiq.com +1 (915) 860-0701 x 4611
		Email to:	Invoices.femx@fokker.com	
		Tax ID#	VAT Nr. NL863223084B01 – EORI Nr NL863223084	
		Notes:		
USA	West USA	POC-HUB	POC DBSchenker HUB LAX: 1. Cher Lee Madrid Tel: +1 310 221 3228 cher.madrid@dbschenker.com 2. Jessica Salas Tel: +1 310 221 3229 Jessica.salas@dbschenker.com	3. Blanca Scaglione Tel: +1 323 908 2644 blanca.scaglione@dbschenker.com USA Key Account Support: Local Account Manager Arturo Gamez Tel: +1 305 439 8298 arturo.gamez@dbschenker.com



Delivery Instructions for Fokker Elmo Suppliers Worldwide

4.3 Ship from: Miami Region (MIA)

Origin	Supplier Location	Final Dest./ Incoterm	Bill to address	Ship to Address
USA	MIA	FE-NL Incoterm: all	GKN Fokker Elmo B.V. (Attn. Finance Department) PO Box 1 3350 AA Papendrecht The Netherlands	GKN Fokker Elmo B.V. Netherlands c/o DBSchenker Inc. 1801 NW 135th Ave - Ste 100, Miami, FL 33182
		Email to:	invoices.fenl@fokker.com	
		VAT/EORI	VAT Nr. NL863223084B01 – EORI Nr NL863223084	
USA	MIA	FE-CN Incoterm: all	GKN Fokker Elmo B.V. (Attn. Finance Department) PO Box 1 3350 AA Papendrecht The Netherlands	GKN Fokker Elmo China Co.Ltd. c/o DBSchenker Inc. 1801 NW 135th Ave - Ste 100, Miami, FL 33182
		Email to:	invoices.fecn@fokker.com	
		Tax ID:	911310006013551068	
		Notes:	Use plastic or "treated" (IPPC) pallets for all cargo with final destination FE-CN. For more information ask your POC at FE.	
USA	MIA	FE-TR Incoterm: all	Fokker Elmo Havacilik Sanayi ve Ticaret Limited Sirketi Allowed abbreviation: Fokker Elmo Hav.San.ve Tic.Ltd.Sti Ege Serbest Bölgesi, Sadi Sokak No: 10 35410 Gaziemir – Izmir Turkey	Fokker Elmo Hav.San.ve Tic.Ltd.Sti Aegean Free Zone, Turkey c/o DBSchenker Inc. 1801 NW 135th Ave - Ste 100, Miami, FL 33182
		E-mail to:	invoices.fetr@fokker.com	
		Tax ID:	388 059 2095	
		Notes:	<ul style="list-style-type: none"> - Always provide (Commercial) Invoice. For custom purposes a pro-forma invoice is NOT allowed. - Turkey has very strict custom regulations. Even a typing error can result into a blocked shipment. Please be very accurate with preparing the documentation. 	
USA	MIA	FE-IN Incoterms: all	GKN Fokker Elmo India Pvt. Ltd Block G, Embassy Industrial Park, Plot no.A-79 MIDC Chakan Industrial Area, Phase II Pune, Maharashtra, 410501 India	GKN Fokker Elmo India Pvt. Ltd. Pune c/o DBSchenker Inc. 1801 NW 135th Ave - Ste 100, Miami, FL 33182
		Email to:	Invoices.FEIN@fokker.com	
		Tax ID#	27AAHCG5063B1ZU	
		Notes:		
USA	MIA	FE-MX Incoterms: all	GKN Fokker Elmo B.V. (Attn. Finance Department) PO Box 1 3350 AA Papendrecht The Netherlands	Rio Bravo International Service Freight Forward Company 12035 Rojas Dr. Suite F El Paso, TX. 79936 Diana Vega Diana.vega@mx.fokker.com +52 614 260 6043 Warehouse contact information Fernando Rico frico@aig.com +1 (915) 860-0701 x 4611
		Email to:	Invoices.femx@fokker.com	
		Tax ID#	VAT Nr. NL863223084B01 – EORI Nr NL863223084	
		Notes:		
USA	MIA	POC-hub MIA	Group e-mail: mia.aeroparts@dbschenker.com Group phone: +1 305 639 5200 POC DBSchenker MIA: 1. Anne Cedeno Tel: +1 305 639 5315 anne.cedeno@dbschenker.com 2. Pauline Allen Tel: +1 305 639 5218 Pauline.allen@dbschenker.com	USA Key Account Support: Local account manager Arturo Gamez Tel: +1 305 439 8298 Arturo.gamez@dbschenker.com



Delivery Instructions for Fokker Elmo Suppliers Worldwide

4.4 Ship from: Seattle Region (SEA)

Origin	Supplier Location	Final Dest./ Incoterm	Bill to address	Ship to Address
USA	SEA	FE-NL Incoterm: all	GKN Fokker Elmo B.V. (Attn. Finance Department) PO Box 1 3350 AA Papendrecht The Netherlands	GKN Fokker Elmo B.V. Netherlands c/o DBSchenker Inc. 855 S 192 nd St Ste 300 Dock Doors 13 – 16 Seatac, WA 98148
		Email to:	invoices.fenl@fokker.com	
		VAT/EORI	VAT Nr: NL863223084B01 – EORI Nr NL863223084	
USA	SEA	FE-CN Incoterm: all	GKN Fokker Elmo B.V. (Attn. Finance Department) PO Box 1 3350 AA Papendrecht The Netherlands	GKN Fokker Elmo China Co.Ltd. c/o DBSchenker Inc. 855 S 192 nd St Ste 300 Dock Doors 13 – 16 Seatac, WA 98148
		Email to:	invoices.fecn@fokker.com	
		Tax ID:	911310006013551068	
		Notes:	Use plastic or "treated" (IPPC) pallets for all cargo with final destination FE-CN. For more information ask your POC at FE.	
USA	SEA	FE-TR Incoterm: all	Fokker Elmo Havacilik Sanayi ve Ticaret Limited Sirketi Allowed abbreviation: Fokker Elmo Hav.San.ve Tic.Ltd.Sti Ege Serbest Bölgesi, Sadi Sokak No: 10 35410 Gaziemir – Izmir Turkey	Fokker Elmo Hav.San.ve Tic.Ltd.Sti Aegean Free Zone, Turkey c/o DBSchenker Inc. 855 S 192 nd St Ste 300 Dock Doors 13 – 16 Seatac, WA 98148
		E-mail to:	invoices.fetr@fokker.com	
		Tax ID:	388 059 2095	
		Notes:	<ul style="list-style-type: none"> - Always provide (Commercial) Invoice. For custom purposes a pro-forma invoice is NOT allowed. - Turkey has very strict custom regulations. Even a typing error can result into a blocked shipment. Please be very accurate with preparing the documentation. 	
USA	SEA	FE-IN Incoterms: all	GKN Fokker Elmo India Pvt. Ltd Block G, Embassy Industrial Park, Plot no.A-79 MIDC Chakan Industrial Area, Phase II Pune, Maharashtra, 410501 India	GKN Fokker Elmo India Pvt. Ltd. Pune c/o DBSchenker Inc. 855 S 192 nd St Ste 300 Dock Doors 13 – 16 Seatac, WA 98148
		Email to:	Invoices.FEIN@fokker.com	
		Tax ID#	27AAHCG5063B1ZU	
		Notes:		
USA	SEA	FE-MX Incoterms: all	GKN Fokker Elmo B.V. (Attn. Finance Department) PO Box 1 3350 AA Papendrecht The Netherlands	Rio Bravo International Service Freight Forward Company 12035 Rojas Dr. Suite F El Paso, TX. 79936 Diana Vega Diana.vega@mx.fokker.com +52 614 260 6043 Warehouse contact information Fernando Rico frico@aiig.com +1 (915) 860-0701 x 4611
		Email to:	Invoices.femx@fokker.com	
		Tax ID#	VAT Nr: NL863223084B01 – EORI Nr NL863223084	
		Notes:		
USA	SEA	POC-HUB	POC DBSchenker SEA: 1. Seattle Exports Tel: +1 206 763 5618 seattleexports@dbschenker.com	USA Key Account Support: Local account manager Arturo Gamez Tel: +1 305 439 8298 Arturo.gamez@dbschenker.com



Delivery Instructions for Fokker Elmo Suppliers Worldwide

4.5 Ship from: Canada Region

Origin	Supplier Location	Final Dest./ Incoterm	Bill to address	Ship to Address
Canada	Canada	FE-NL Incoterm: all	GKN Fokker Elmo B.V. (Attn. Finance Department) PO Box 1 3350 AA Papendrecht The Netherlands	GKN Fokker Elmo B.V. Netherlands c/o DBSchenker of Canada Ltd 2100 Reverchon Avenue Dorval Quebec H9P 2S7 Canada
		Email to:	invoices.fenl@fokker.com	
		VAT/EORI	VAT Nr: NL863223084B01 – EORI Nr NL863223084	
Canada	Canada	FE-CN Incoterm: all	GKN Fokker Elmo B.V. (Attn. Finance Department) PO Box 1 3350 AA Papendrecht The Netherlands	GKN Fokker Elmo China Co.Ltd. c/o DBSchenker of Canada Ltd 2100 Reverchon Avenue Dorval Quebec H9P 2S7 Canada
		Email to:	invoices.fecn@fokker.com	
		Tax ID:	911310006013551068	
		Notes:	Use plastic or "treated" (IPPC) pallets for all cargo with final destination FE-CN. For more information ask your POC at FE.	
Canada	Canada	FE-TR Incoterm: all	Fokker Elmo Havacilik Sanayi ve Ticaret Limited Sirketi Allowed abbreviation: Fokker Elmo Hav.San.ve Tic.Ltd.Sti Ege Serbest Bölgesi, Sadi Sokak No: 10 35410 Gaziemir – Izmir Turkey	Fokker Elmo Hav.San.ve Tic.Ltd.Sti Aegean Free Zone, Turkey c/o DBSchenker of Canada Ltd 2100 Reverchon Avenue Dorval Quebec H9P 2S7 Canada
		E-mail to:	invoices.fetr@fokker.com	
		Tax ID:	388 059 2095	
		Notes:	<ul style="list-style-type: none"> - Always provide (Commercial) Invoice. For custom purposes a pro-forma invoice is NOT allowed. - Turkey has very strict custom regulations. Even a typing error can result into a blocked shipment. Please be very accurate with preparing the documentation. 	
Canada	Canada	FE-IN Incoterms: all	GKN Fokker Elmo India Pvt. Ltd Block G, Embassy Industrial Park, Plot no.A-79 MIDC Chakan Industrial Area, Phase II Pune, Maharashtra, 410501 India	GKN Fokker Elmo India Pvt. Ltd. Pune c/o DBSchenker of Canada Ltd 2100 Reverchon Avenue Dorval Quebec H9P 2S7 Canada
		Email to:	Invoices.FEIN@fokker.com	
		Tax ID#	27AAHCG5063B1ZU	
		Notes:		
Canada	Canada	FE-MX Incoterms: all	GKN Fokker Elmo B.V. (Attn. Finance Department) PO Box 1 3350 AA Papendrecht The Netherlands	Rio Bravo International Service Freight Forward Company 12035 Rojas Dr. Suite F El Paso, TX. 79936 Diana Vega Diana.vega@mx.fokker.com +52 614 260 6043 Warehouse contact information Fernando Rico frico@aiiq.com +1 (915) 860-0701 x 4611
		Email to:	Invoices.femx@fokker.com	
		Tax ID#	VAT Nr: NL863223084B01 – EORI Nr NL863223084	
		Notes:		
Canada	Canada	POC-HUB	Group e-mail: scldorvalairexport@dbschenker.com Group tel: +1 514 633 2520 POC DBSchenker HUB YUL: 1. Rhonda frangella Rhonda.frangella@dbschenker.com	Canada Key Account Support: Arturo Gamez Tel: +1 305 439 8298 Arturo.gamez@dbschenker.com

4.6 Ship from: Europe Region, except from United Kingdom.

For Shipping Instructions ex Europe except from United Kingdom.

Origin	Supplier Location	Final Dest./ Incoterm	Bill to address	Ship to Address
Europe except UK	Europe except UK	FE-NL Incoterm: DAP or DDU (Papendrecht)	GKN Fokker Elmo B.V. (Attn. Finance Department) PO Box 1 3350 AA Papendrecht The Netherlands	GKN Fokker Elmo B.V. Netherlands Anthony Fokkerweg 4, Building 32 3351 NL Papendrecht The Netherlands
		Email to:	invoices.fenl@fokker.com	
		VAT/EORI	VAT Nr: NL863223084B01 – EORI Nr NL863223084	
Europe except UK	Europe except UK	FE-NL Incoterm: FCA(suppliers) or FCA(Hub)	GKN Fokker Elmo B.V. (Attn. Finance Department) PO Box 1 3350 AA Papendrecht The Netherlands	<i>(Direct delivery by TNT or Fedex to)</i> GKN Fokker Elmo B.V. Netherlands Anthony Fokkerweg 4, Building 32 3351 NL Papendrecht The Netherlands
		Email to:	invoices.fenl@fokker.com	
		Notes:	For Dangerous Goods (DG) see POC-HUB notes.	
Europe except UK	Europe except UK	FE-CN Incoterm: all	GKN Fokker Elmo B.V. (Attn. Finance Department) PO Box 1 3350 AA Papendrecht The Netherlands	GKN Fokker Elmo China Co.Ltd. c/o DBSchenker Internat. B.V. Fokkerweg 300 1438 AN Oudemeer The Netherlands
		Email to:	invoices.fecn@fokker.com	
		Tax ID:	911310006013551068	
		Notes:	– Use plastic or "treated" (IPPC) pallets for all cargo with final destination FE-CN. For more information ask your POC at FE.	
Europe except UK	Europe except UK	FE-TR Incoterm: all	Fokker Elmo Havacilik Sanayi ve Ticaret Limited Sirketi Allowed abbreviation: Fokker Elmo Hav.San.ve Tic.Ltd.Sti Ege Serbest Bölgesi, Sadi Sokak No: 10 35410 Gaziemir – Izmir Turkey	Fokker Elmo Hav.San.ve Tic.Ltd.Sti Aegean Free Zone, Turkey c/o DBSchenker Internat. B.V. Fokkerweg 300 1438 AN Oudemeer, The Netherlands
		E-mail to:	invoices.fetr@fokker.com	
		Tax ID:	388 059 2095	
		Notes:	– Always provide (Commercial) Invoice. For custom purposes a pro-forma invoice is NOT allowed. – Turkey has very strict custom regulations. Even a typing error can result into a blocked shipment. Please be very accurate with preparing the documentation.	
Europe except UK	Europe except UK	FE-IN Incoterms: all	GKN Fokker Elmo India Pvt. Ltd Block G, Embassy Industrial Park, Plot no.A-79 MIDC Chakan Industrial Area, Phase II Pune, Maharashtra, 410501 India	GKN Fokker Elmo India Pvt. Ltd. Pune c/o DBSchenker International B.V. Fokkerweg 300 1438 AN Oudemeer, The Netherlands
		Email to:	Invoices.FEIN@fokker.com	
		Tax ID#	27AAHCG5063B1ZU	
		Notes:		
Europe except UK	Europe except UK	FE-MX Incoterms: all	GKN Fokker Elmo B.V. (Attn. Finance Department) PO Box 1 3350 AA Papendrecht The Netherlands	GKN Fokker Elmo B.V. Mexico c/o DBSchenker Internat. B.V. Fokkerweg 300 1438 AN Oudemeer The Netherlands
		Email to:	Invoices.femx@fokker.com	
		Tax ID#	VAT Nr: NL863223084B01 – EORI Nr NL863223084	
		Notes:		
Europe except UK	Europe except UK		Deliveries to Fokker Elmo Netherlands: Ship by TNT/Fedex, required instructions on request. Other Fokker Elmo destinations: Pick Up request by e-mail: nl.sm.ams.export-fokker@dbschenker.com	
		Dangerous Goods:	Hazardous Material by FCA(Hub AMS) suppliers: A: Pre-advise Schenker AOG (nl.sm.ams.export-fokker@dbschenker.com) who will approve the delivery only to the address below. B: The shipment should be accompanied by a Dangerous Goods (DG) certificate. Address for hazardous material: Vertex, Gevaarlijke stoffen, Fokkerweg 300, BLDG 8F 1438 AN Oude Meer	
		Export Controlled parts:	Deliver Export Controlled parts separately with a copy of the related Export License. It is allowed to label the shipments with the final Fokker Elmo destination address as "ship to" address if it is required by the Export license. Shipping via DBSchenker AMS.	

Europe except UK	Europe except UK	POC-HUB	POC DBSchenker HUB AMS: 1. Main Key Account Coordinator: Kitty Cheung Tel: +31 (0) 20 5000 564 Kitty.Cheung@dbschenker.com 2. Back-up Key Account Coordinator: Santosh Ramdin Tel: +31 (0) 20 5000 058 santosh.ramdin@dbschenker.com	Corperated Account Manager: 3.Lars Zwinkels Tel: +31 (6) 5547 6995 lars.zwinkels@dbschenker.com
------------------	------------------	---------	---	--

4.6.1 Ship from: Europe Region, except from United Kingdom, cont'd.

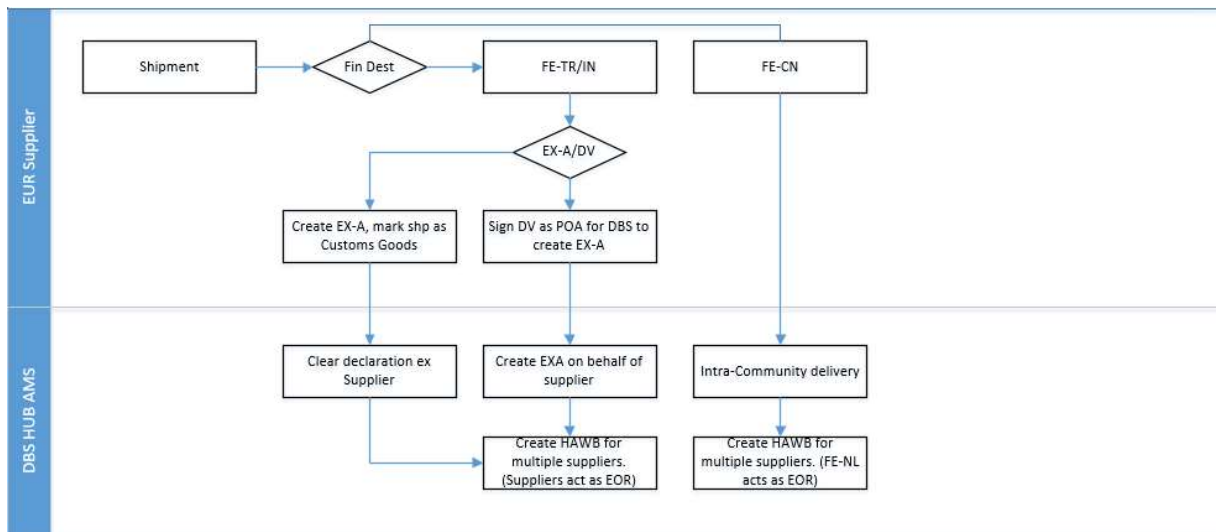
Final destination	Supplier Invoice to:	Payment to Supplier by:	Exporter of record:	Invoice for export:
FE-IN, Fokker Elmo India	FE-IN	FE-IN	Supplier ¹	Supplier
FE-CN, Fokker Elmo China	FE-NL	FE-NL	FE-NL	FE-NL
FE-TR, Fokker Elmo Turkey	FE-TR	FE-TR	Supplier ¹	Supplier
FE-NL, Fokker Elmo Netherlands	FE-NL	FE-NL	N/A	N/A
FE-MX, Fokker Elmo Mexico	FE-NL	FE-NL	Supplier ¹	Supplier

Shipments to FE-NL and FE-CN: ship as intra-community goods

Shipments to FE-IN and FE-TR:

1) Ship as exports by:

- Creating an EX-A. Mark/label boxes in a clear way, so DB Schenker knows how to process. DB Schenker destination office will clear the EX-A.
- Provide a PoA to DB Schenker so they can create an EX-A on behalf of the supplier. DB Schenker will follow-up the customs formalities





4.7 Ship from: United Kingdom Region

For Shipping Instructions ex United Kingdom.

Origin	Supplier Location	Final Destination	Bill to address	Ship to Address
UK	United Kingdom	FE-NL Incoterm: DAP or DDU (Papendrecht)	GKN Fokker Elmo B.V. (Attn. Finance Department) PO Box 1 3350 AA Papendrecht The Netherlands Email to: invoices.fenl@fokker.com	GKN Fokker Elmo B.V. Netherlands Anthony Fokkerweg 4, Building 32 3351 NL Papendrecht The Netherlands
		VAT/EORI	VAT Nr: NL863223084B01 – EORI Nr NL863223084	
UK	United Kingdom	FE-NL Incoterm: FCA(suppliers) or FCA(Hub)	GKN Fokker Elmo B.V. (Attn. Finance Department) PO Box 1 3350 AA Papendrecht The Netherlands Email to: invoices.fenl@fokker.com	<i>(Direct delivery by TNT or Fedex to)</i> GKN Fokker Elmo B.V. Netherlands Anthony Fokkerweg 4, Building 32 3351 NL Papendrecht The Netherlands
		Notes:	For Dangerous Goods (DG) see POC-HUB notes.	
UK	United Kingdom	FE-CN Incoterm: all	GKN Fokker Elmo B.V. (Attn. Finance Department) PO Box 1 3350 AA Papendrecht The Netherlands Email to: invoices.fecn@fokker.com	GKN Fokker Elmo China Co.Ltd. c/o DBSchenker Internat. B.V. c/o DBSchenker LTD Schenker House, LHR portal, Scylla Rd. LHR Airport, Hounslow TW6 3FE, United Kingdom
		Tax ID:	911310006013551068	
		Notes:	– Use plastic or "treated" (IPPC) pallets for all cargo with final destination FE-CN. For more information ask your POC at FE.	
UK	United Kingdom	FE-TR Incoterm: all	Fokker Elmo Havacilik Sanayi ve Ticaret Limited Sirketi Allowed abbreviation: Fokker Elmo Hav.San.ve Tic.Ltd.Sti Ege Serbest Bölgesi, Sadi Sokak No: 10 35410 Gazimur – Izmir Turkey E-mail to: invoices.fetr@fokker.com	Fokker Elmo Hav.San.ve Tic.Ltd.Sti Aegean Free Zone, Turkey c/o DBSchenker LTD Schenker House, LHR portal, Scylla Rd. LHR Airport, Hounslow TW6 3FE, United Kingdom
		Tax ID:	388 059 2095	
		Notes:	– Always provide (Commercial) Invoice. For custom purposes a pro-forma invoice is NOT allowed. – Turkey has very strict custom regulations. Even a typing error can result into a blocked shipment. Please be very accurate with preparing the documentation.	
Europe except UK	United Kingdom	FE-IN Incoterms: all	GKN Fokker Elmo India Pvt. Ltd Block G, Embassy Industrial Park, Plot no.A-79 MIDC Chakan Industrial Area, Phase II Pune, Maharashtra, 410501 India Email to: Invoices.FEIN@fokker.com	GKN Fokker Elmo India Pvt. Ltd. Pune c/o DBSchenker LTD Schenker House, LHR portal, Scylla Rd. LHR Airport, Hounslow TW6 3FE, United Kingdom
		Tax ID#	27AAHCG5063B1ZU	
		Notes:		
Europe except UK	United Kingdom	FE-MX Incoterms: all	GKN Fokker Elmo B.V. (Attn. Finance Department) PO Box 1 3350 AA Papendrecht The Netherlands Email to: Invoices.FEIN@fokker.com	GKN Fokker Elmo B.V. Mexico c/o DBSchenker LTD Schenker House, LHR portal, Scylla Rd. LHR Airport, Hounslow TW6 3FE, United Kingdom
		Tax ID#	VAT Nr: NL863223084B01 – EORI Nr NL863223084	
		Notes:		
UK	United Kingdom		Deliveries to Fokker Elmo Netherlands: Ship by TNT/Fedex, required instructions on request. Other Fokker Elmo destinations: Pick Up request by e-mail before 12:00 o'clock – Pick up same working day, else next working day: aerospace.lhexports@dbschenker.com	
		Export Controlled parts:	Deliver Export Controlled parts separately with a copy of the related Export License. It is allowed to label the shipments with the final Fokker Elmo destination address as "ship to" address if it is required by the Export license. Shipping via DBSchenker LHR.	
UK	UK	PoC-HUB	E-Mail Exports operator: gb.sm.lon.aerospace-lhr-exports@dbschenker.com POC DBSchenker HUB LHR: 1. Louise Roderick Tel: +44 (0) 208 831 4793 Louise.roderick@dbschenker.com	Client Service Manager 2. Mike Burrell Tel: +44 (0) 208 831 4804 mike.burrell@dbschenker.com

4.8 Ship from: India

For Shipping Instructions ex India

Origin	Supplier Location	Final Destination	Bill to address	Ship to Address
India	India	FE-NL Incoterm: all	GKN Fokker Elmo B.V. (Attn. Finance Department) PO Box 1 3350 AA Papendrecht The Netherlands	GKN Fokker Elmo B.V. Netherlands c/o BVM Storage Solutions Pvt Ltd #77/10, Palekamma Nagar Behind Decathlon Chikkajala Bangalore 562157
		Email to:	invoices.fenl@fokker.com	
		VAT/EORI	VAT Nr: NL863223084B01 – EORI Nr NL863223084	
India	India	FE-CN Incoterm: all	GKN Fokker Elmo B.V. (Attn. Finance Department) PO Box 1 3350 AA Papendrecht The Netherlands	GKN Fokker Elmo (langfang) Electrical Systems Co. Ltd. c/o BVM Storage Solutions Pvt Ltd #77/10, Palekamma Nagar Behind Decathlon Chikkajala Bangalore 562157
		Email to:	invoices.fecn@fokker.com	
		Tax ID:	911310006013551068	
		Notes:	– Use plastic or "treated" (IPPC) pallets for all cargo with final destination FE-CN. For more information ask your POC at FE.	
India	India	FE-TR Incoterm: all	Fokker Elmo Havacılık Sanayi ve Ticaret Limited Şirketi Allowed abbreviation: Fokker Elmo Hav.San.ve Tic.Ltd.Sti Ege Serbest Bölgesi, Sadi Sokak No: 10 35410 Gaziemir – Izmir Turkey	Fokker Elmo Havacılık Sanayi ve Ticaret Limited Şirketi c/o BVM Storage Solutions Pvt Ltd #77/10, Palekamma Nagar Behind Decathlon Chikkajala Bangalore 562157
		E-mail to:	invoices.fetr@fokker.com	
		Tax ID:	388 059 2095	
		Notes:	– Always provide (Commercial) Invoice. For custom purposes a pro-forma invoice is NOT allowed. – Turkey has very strict custom regulations. Even a typing error can result into a blocked shipment. Please be very accurate with preparing the documentation.	
India	India	FE-IN Incoterms: all	GKN Fokker Elmo India Pvt. Ltd Block G, Embassy Industrial Park, Plot no.A-79 MIDC Chakan Industrial Area, Phase II Pune, Maharashtra, 410501 India	GKN Fokker Elmo India Pvt. Ltd c/o BVM Storage Solutions Pvt Ltd #77/10, Palekamma Nagar Behind Decathlon Chikkajala Bangalore 562157
		Email to:	Invoices.FEIN@fokker.com	
		Tax ID#	27AAHCG5063B1ZU	
		Notes:		
India	India	FE-MX Incoterms: all	GKN Fokker Elmo B.V. (Attn. Finance Department) PO Box 1 3350 AA Papendrecht The Netherlands	GKN Fokker Elmo B.V. Mexico c/o BVM Storage Solutions Pvt Ltd #77/10, Palekamma Nagar Behind Decathlon Chikkajala Bangalore 562157
		Email to:	Invoices.femx@fokker.com	
		Tax ID#	VAT Nr: NL863223084B01 – EORI Nr NL863223084	
		Notes:		
India	I	PoC-HUB MOM	POC DBSchenker HUB MOM: 1. Roop Gandhi Vertical manager aerospace Tel: +91 (0) 9910107060 Roop.gandhi@dbschenker.com	2. Bharat Rawool Tel: +91 (0) 9029429000 Senior Executive Air Export bharat.rawool@dbschenker.com

4.9 Ship from: Origins, not mentioned in 4.1 – 4.8

For Shipping Instructions ex other Origins = direct shipment

Origin	Supplier Location	Final Destination	Bill to address	Ship to Address
US	Region: -DFW -Ireland	FE-NL Incoterm: all	GKN Fokker Elmo B.V. (Attn. Finance Department) PO Box 1 3350 AA Papendrecht The Netherlands	GKN Fokker Elmo B.V. Netherlands Anthony Fokkerweg 4, Building 32 3351 NL Papendrecht The Netherlands
		Email to:	invoices.fenl@fokker.com	
		VAT/EORI	VAT Nr: NL863223084B01 – EORI Nr NL863223084	
US	Region: -DFW -Ireland	FE-CN Incoterm: all	GKN Fokker Elmo B.V. (Attn. Finance Department) PO Box 1 3350 AA Papendrecht The Netherlands	GKN Fokker Elmo (langfang) Electrical Systems Co. Ltd. #3 Workshop, No.28 No.2 Road Langfang Economic and Technical Development Zone Langfang 065001 Hebei, China
		Email to:	invoices.fecn@fokker.com	
		Tax ID:	911310006013551068	
		Notes:	– Use plastic or "treated" (IPPC) pallets for all cargo with final destination FE-CN. For more information ask your POC at FE.	
US	Region: -DFW -Ireland	FE-TR Incoterm: all	Fokker Elmo Havacılık Sanayi ve Ticaret Limited Şirketi Allowed abbreviation: Fokker Elmo Hav.San.ve Tic.Ltd.Sti Ege Serbest Bölgesi, Sadi Sokak No: 10 35410 Gaziemir – Izmir Turkey	Fokker Elmo Havacılık Sanayi ve Ticaret Limited Şirketi Allowed abbreviation: Fokker Elmo Hav.San.ve Tic.Ltd.Şti Ege Serbest Bölgesi, Sadi Sokak No: 10 35410 Gaziemir – Izmir, Turkey
		E-mail to:	invoices.fetr@fokker.com	
		Tax ID:	388 059 2095	
		Notes:	– Always provide (Commercial) Invoice. For custom purposes a pro-forma invoice is NOT allowed. – Turkey has very strict custom regulations. Even a typing error can result into a blocked shipment. Please be very accurate with preparing the documentation.	
US	Region: -DFW -Ireland	FE-IN Incoterms: all	GKN Fokker Elmo India Pvt. Ltd Block G, Embassy Industrial Park, Plot no.A-79 MIDC Chakan Industrial Area, Phase II Pune, Maharashtra, 410501 India	GKN Fokker Elmo India Pvt. Ltd Block G, Embassy Industrial Park, Plot no.A-79 MIDC Chakan Industrial Area, Phase II Pune, Maharashtra, 410501 India
		Email to:	Invoices.FE.IN@fokker.com	
		Tax ID#	27AAHCG5063B1ZU	
		Notes:		
US	Region: -DFW -Ireland	FE-MX Incoterms: all	GKN Fokker Elmo B.V. (Attn. Finance Department) PO Box 1 3350 AA Papendrecht The Netherlands	GKN Fokker Elmo B.V. Mexico RIO Bravo Int. Service Inc. 12035, Rojas D'r. Suite F El Paso TX 79936 USA
		Email to:	Invoices.femx@fokker.com	
		Tax ID#	VAT Nr: NL863223084B01 – EORI Nr NL863223084	
		Notes:		
US	Region: -DFW -Ireland		1. If Weight < 50 Kg: Create Shipment at Fedex/TNT 2. If Weight > 50 Kg: Contact local DBSchenker branch	

Delivery Instructions for Fokker Elmo Suppliers Worldwide

5 AIRCRAFT ON GROUND (AOG) / EXPRESS SHIPMENTS (CRITICLE OR SINGLE)

For those urgent shipments on the account of GKN Fokker Elmo, a written approval from GKN Fokker Elmo is required.

Origin	Supplier Location	Final Destination	Bill to address	Ship to Address
All	All	FE-NL Incoterm: all	GKN Fokker Elmo B.V. (Attn. Finance Department) PO Box 1 3350 AA Papendrecht The Netherlands	GKN Fokker Elmo B.V. Netherlands Anthony Fokkerweg 4, Building 32 3351 NL Papendrecht The Netherlands
		Email to:	invoices.fenl@fokker.com	
		Notes:	For Dangerous Goods (DG) see POC-HUB notes.	
		VAT/EORI	VAT Nr: NL863223084B01 – EORI Nr NL863223084	
All	All	FE-CN Incoterm: all	GKN Fokker Elmo B.V. (Attn. Finance Department) PO Box 1 3350 AA Papendrecht The Netherlands	Fokker Elmo (langfang) Electrical Systems Co. Ltd. #3 Workshop, No.28 No.2 Road Langfang Economic and Technical Development Zone Langfang 065001 Hebei, China
		Email to:	invoices.fecn@fokker.com	
		Tax ID:	911310006013551068	
		Notes:	– Use plastic or "treated" (IPPC) pallets for all cargo with final destination FE-CN. For more information ask your POC at FE.	
All	All	FE-TR Incoterm: all	Fokker Elmo Havacılık Sanayi ve Ticaret Limited Şirketi Allowed abbreviation: Fokker Elmo Hav.San.ve Tic.Ltd.Şti Ege Serbest Bölgesi, Sadi Sokak No: 10 35410 Gaziemir – Izmir Turkey	Fokker Elmo Havacılık Sanayi ve Ticaret Limited Şirketi Allowed abbreviation: Fokker Elmo Hav.San.ve Tic.Ltd.Şti Ege Serbest Bölgesi, Sadi Sokak No: 10 35410 Gaziemir – Izmir, Turkey
		E-mail to:	invoices.fetr@fokker.com	
		Tax ID:	388 059 2095	
		Notes:	– Always provide (Commercial) Invoice. For custom purposes a pro-forma invoice is NOT allowed. – Turkey has very strict custom regulations. Even a typing error can result into a blocked shipment. Please be very accurate with preparing the documentation.	
All	All	FE-IN Incoterms: all	GKN Fokker Elmo India Pvt. Ltd Block G, Embassy Industrial Park, Plot no.A-79 MIDC Chakan Industrial Area, Phase II Pune, Maharashtra, 410501 India	GKN Fokker Elmo India Pvt. Ltd Block G, Embassy Industrial Park, Plot no.A-79 MIDC Chakan Industrial Area, Phase II Pune, Maharashtra, 410501 India
		Email to:	Invoices.FEIN@fokker.com	
		Tax ID#	27AAHCG5063B1ZU	
		Notes:		
All	All	FE-MX Incoterms: all	GKN Fokker Elmo B.V. (Attn. Finance Department) PO Box 1 3350 AA Papendrecht The Netherlands	GKN Fokker Elmo B.V. Mexico RIO Bravo Int. Service Inc. 12035, Rojas D'r. Suite F El Paso TX 79936 USA
		Email to:	Invoices.femx@fokker.com	
		Tax ID#	VAT Nr: NL863223084B01 – EORI Nr NL863223084	
		Notes:		
All	All	POC-AOG Express	<p>For AOG shipments on the account of Fokker Elmo, a written approval from Fokker Elmo is required! Follow instructions of Fokker Elmo employee</p> <p>3. If Weight < 50 Kg: Create Shipment at Fedex/TNT</p> <p>4. If Weight > 50 Kg: POC DBSchenker AOG desks: DBSchenker AOG desk – Amsterdam (Global Control Tower) Tel: +31 (0) 20 5000 070 (business hours) Tel: +31 (0) 6 2266 4409 (outside business hours) nl.sm.ams.aog@dbschenker.com (For shipments ex US add MIA desk as well due to time zone) DBSchenker AOG desk - USA Tel: +1 866 890 1235 us.sm.mia.aog-usa@dbschenker.com</p>	

Delivery Instructions for Fokker Elmo Suppliers Worldwide

6 COMMUNICATION MATRIX FOR GLOBAL TRANSPORT

Communication Matrix	Point of Contact	Escalation
Fokker Elmo Netherlands (FE-NL)	<p>INBOUND: Function: Sr. Employee Incoming Goods Name: Nancy Beij Tel: +31 (0) 164 617698 e-mail: nancy.beij@fokker.com</p> <p>OUTBOUND: Function: Sr. Employee Expedition Name: Bram van Poortvliet Tel: +31 (0) 164 617723 e-mail: bram.vanpoortvliet@fokker.com</p>	<p>Function: SCM Manager Name: Eda Gulsen Tel: +31 (0) 06-13726290 e-mail: eda.guelsen@fokker.com</p> <p>Function: Procurement Manager Name: Frank Oudshoorn Tel: +31 (0)6 57 44 34 69 e-mail: frank.oudshoorn@fokker.com</p>
Fokker Elmo China (FE-CN)	<p>INBOUND: Function: Import Specialist Name: Gu Junge Tel: +86 (0) 316 5978 634 e-mail: gu.junge@fokker.com</p> <p>OUTBOUND: Function: Export Specialist Name: Zhou Yanling Tel: +86 (0) 316 5978 652 e-mail: zhou.yanling@fokker.com</p>	<p>Function: ImpEx Supervisor Name: Zhang Qi Tel: +86 (0) 316 5978 653 e-mail: zhang.qi@fokker.com</p> <p>Function: Procurement Manager Name: Duan Mingjian (Jacky) Tel: + 86 (0) 316 5978 671 e-mail: duan.mingjian@fokker.com</p>
Fokker Elmo Turkey (FE-TR)	<p>INBOUND & OUTBOUND Function: Supervisor Import & Export Name: Canan ABALI Tel: +90 (0) 232-258 0141 e-mail: canan.abali@fokker.com</p>	<p>Function: SCM Manager Name: Emre Demir Tel: +90 (0) 531 697 9805 e-mail: Emre.Demir@fokker.com</p> <p>Function: Procurement Manager Name: Beril Kuyum Tel: +90 (0) 5367753121 e-mail: beril.kuyum@fokker.com</p>
Fokker Elmo Pune India (FE-IN)	<p>INBOUND & OUTBOUND Function: Procurem. Ops Manager Name: Yogesh Yadav Tel: +91 (0) 2135636915 e-mail: yogesh.yadav@fokker.com</p>	<p>Function: SCM Manager Name: Varsha Funde Tel: +91 (0) 2135636916 e-mail: Varsha.funde@fokker.com</p>
Fokker Elmo Mexico (FE-MX)	<p>INBOUND Funtion: Operational Buyer Name: Diana Vega Tel: +52 614 260 6043 E-mail: diana.vega@mx.fokker.com</p> <p>OUTBOUND: Function: Warehouse Leader Name: Octavio Andujo Tel: E-mail: Octavio.andujo@mx.fokker.com</p>	<p>Function: Procurement Ops Manager Name: Nubia Manriquez Tel: Email: Nubia.manriquez@mx.fokker.com</p> <p>Function: SCM Manager Name: Cesar Carrasco Tel: +52 614 260 6054 E-mail: Cesar.carrasco@mx.fokker.com</p>
DB Schenker	See page related Shipping Instructions.	



Communication Matrix	Point of Contact	Escalation
Fokker Elmo Head Quarter	Function: Sr. Buyer (Transport Management) Name: Patrick Lankhorst Tel: +31 (0) 6 510 012 41 e-mail patrick.lankhorst@fokker.com	Function: Supply Chain Director EWIS Name: Kevin Koevoets Tel: +31 (0) 6 82561508 e-mail: kevin.koevoets@fokker.com