

5. DEFINITIONS

In alphanumeric order:

Concession	<p>Permission to use or release a product that does not conform to the specified requirements.</p> <p>Note: A concession is generally limited to the delivery of a product that has nonconforming characteristics within specified limits for an agreed time or quantity of that product.</p>
Concession Request	Written request for a concession before delivery of a nonconforming product.
Critical Safety Item (CSI)	<p>In short: CSI's are those whose failure results in a direct hazardous effect. A hazardous effect prevents continued safe flight and landing.</p> <p>An item (part, assembly, installation, or production system) that, if missing or not conforming to the design data, quality requirements, or overhaul and maintenance documentation, would result in an unsafe condition per the established risk acceptance criteria.</p> <p>CSI's include items determined to be "Life Limited", "Fracture Critical", "Fatigue Sensitive", etc. The determining factor in CSI's is the consequence of failure, not the probability that the failure or consequence would occur. For the purpose of this instruction "Critical Safety Item", "Flight Safety Critical Aircraft Part", "Flight Safety Part", "Flight Safety Critical Part" are all synonymous. The term Critical Safety Item is the encompassing term used throughout this document.</p>
Defect	A lack of something necessary for completeness, adequacy, or perfection.
Disposition	Instruction that determines how a nonconforming product will be used (Rework, Repair, Use-As-Is, Scrap).
"Form", "Fit" and "Function"	<ul style="list-style-type: none"> • Form: the shape, size, dimensions, mass, weight, and other visual parameters which uniquely characterize a product. For software, form denotes the language and media. • Fit: The ability of a product to physically interface or interconnect with or become an integral part of another product. • Function: The action or actions which a product is designed to perform.
Flight Safety Part	See Critical Safety Item (CSI).
Material Review Board	Committee of people authorized by the Engineering Authority to review and determine the disposition of nonconforming product.
Multi-Defect	Nonconformance in the concession request described by more than 1 defect.
Nonconforming Product	Any material, process, part, or product in which one or more characteristics do not conform to the requirements of the contract, specification, drawing, or other applicable product requirements.
Product	A product is the output of a process. Products can be tangible or intangible. Four generic product categories are recognized: Services, Software, Hardware, and Processed Materials.
Product Quality Escape	Any product released that is subsequently determined to be nonconforming to contract and/or product specification requirements.

Definitions in alphanumeric order (continued):

Repair	An action of correction that renders the nonconforming product to a status that it fulfils the intended use or purpose but may not meet the specified requirements. An action of correction to make a product functional, but not 100% conforming to requirements. Any Rework on a Critical Safety Item (CSI) shall also be treated as a Repair. For all Repairs a MRB-disposition is required.		
	<i>Examples to clarify Repair</i>	<i>Nonconforming condition</i>	<i>Appropriate action</i>
	#1	<i>Bore internal diameter is discovered .002 inch (0,05 mm) under low limit after nital etch outside processing.</i>	<i>Submit Concession Request to FLG</i>
	#2	<i>Pit is discovered in the chrome by the supplier during the final grind operation.</i>	<i>Submit Concession Request to FLG</i>
Rework	An action of correction to correct nonconformities that bring a product back into 100% conformance to the applicable requirements prior to any controlled process. No concession request required unless Critical Safety Item (CSI) or otherwise specified.		
	<i>Examples to clarify Rework</i>	<i>Nonconforming condition</i>	<i>Appropriate action</i>
	#1	<i>Bore internal diameter is discovered .002 inch (0,05 mm) under low limit prior to outside processing.</i>	<i>Condition may be reworked.</i>
	#2	<i>Pit is discovered in the chrome by the processor during final review.</i>	<i>Condition may be reworked to as outlined within the specific plating specification requirements.</i>
Scrap	An action that renders the nonconforming or suspect product to a condition which prevents usability of the product in any manner. (Does not meet Form-Fit-Function).		
Supplier	The organization that provides a product or service. Same as subcontractor. Can be an internal or external supplier, sub-tier supplier and/or processor.		
Use-As-Is	Nonconforming product with or without Repair or Rework which can be used because it does not violate "Form", "Fit" and "Function". Concession request required.		
1-DEFECT	Nonconformance in the concession request described by 1 defect.		

6. ABBREVIATIONS

In alphanumeric order:

B/P	Blue Print (Engineering Drawing)
CA	Corrective Action
CoC	Certificate of Conformity
CR	Concession Request
CSI	Critical Safety Item
ECD	Engineering Change Data
EN	Engineering Note
EO	Engineering Order
FLG	Fokker Landing Gear B.V.
i.a.w.	In accordance with
ID	Identification Number
MRB	Material Review Board
N/A	Not Applicable
N/C	Non Conformance
N or n	Non Specified Number
NL	Notes List
No. or Nr.	Number
P/N	Part Number
PL	Parts List
PO	Purchase Order
Op. No. or Op. Nr.	Operation Number
QIS	Quality Information System
Qty	Quantity
RCS	Repair Control Sheet
SH	Sheet (Blue Print, Engineering Drawing)
SQA	Supplier Quality Assurance
#	Number sign

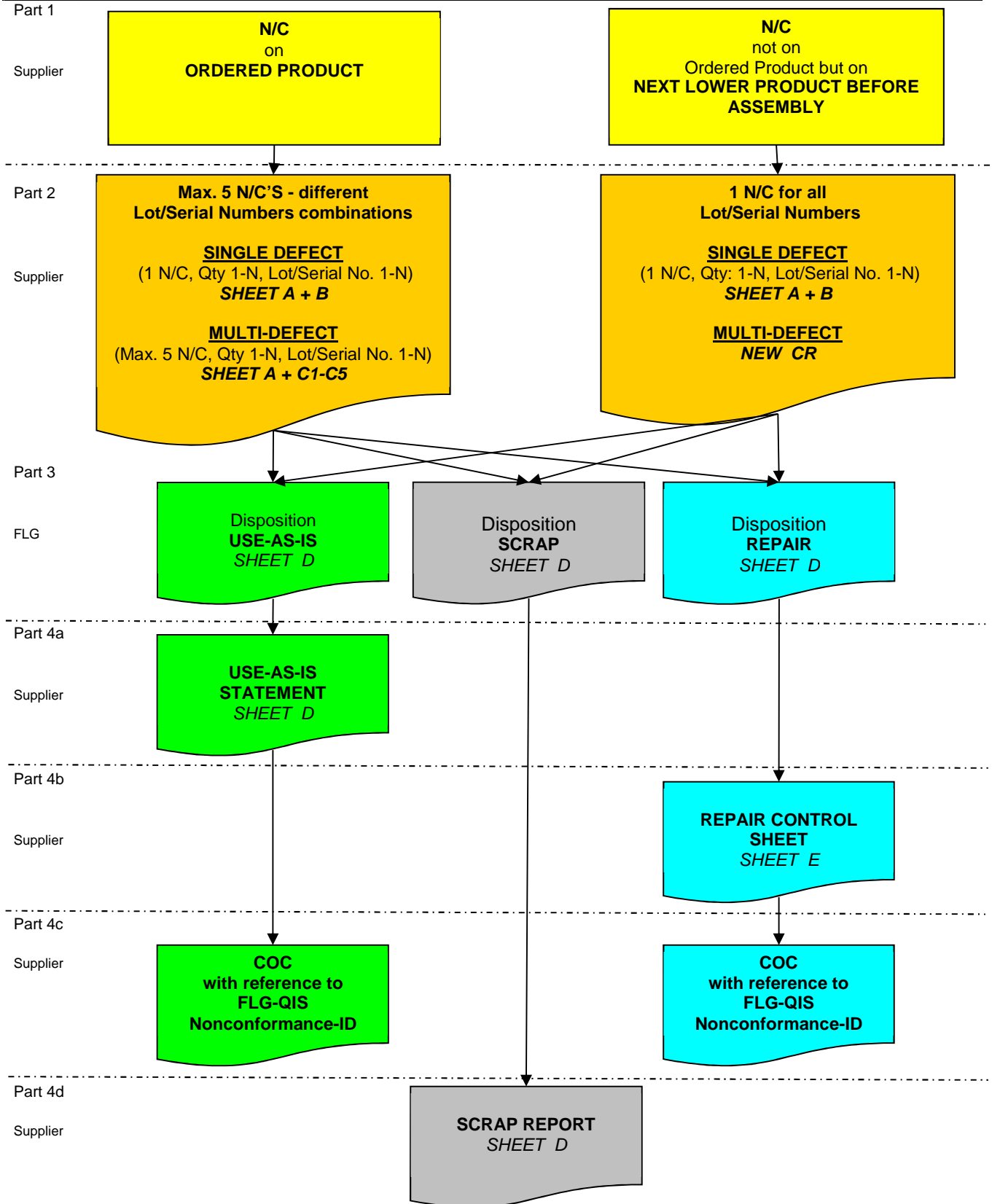
8.3. CONTROL OF NONCONFORMING PRODUCT

8.3.1. REQUIREMENTS

- 8.3.1.1. All requirements as laid down in the SAE AS9100 Section 8.3 Control of Nonconforming Product are applicable.
In addition to these requirements:
- 8.3.1.2. The supplier shall not use dispositions of Use-As-Is or Repair, unless specifically authorized by a written authorization of FLG or FLG authorized representative.
- 8.3.1.3. As clarified in the definitions any Rework on a Critical Safety Item (CSI) shall be treated as a Repair.
- 8.3.1.4. Concession requests may only be applied for products that are part of a PO of FLG.
- 8.3.1.5. Concessions requests may only be requested for nonconforming product detected before delivery to FLG.
- 8.3.1.6. Any product released by a supplier or sub-tier supplier that is subsequently determined as to be nonconforming shall be handled as a Product Quality Escape.
Data related to the description of a nonconformity shall be in accordance with SAE AS9131.
- 8.3.1.7. Concession requests for Use-As-Is or Repair need to be addressed to the responsible buyer of FLG by means of the sheets as referred in the Instruction in Section 8.3.4.
- 8.3.1.8. FLG will review the concession request and will either provide a written disposition or a rejection.
- 8.3.1.9. If FLG is not the Authorized Design Organization, FLG is responsible to obtain a disposition from the Authorized Design Organization.
- 8.3.1.10. If a concession request results in delivery of products according an approved MRB disposition, supplier has to comply with the special delivery requirements of FLG as specified herein.
- 8.3.1.11. Special delivery documents as described in Section 8.3.3.

8.3.2. SCHEMATIC REPRESENTATION OF THE CONCESSION FLOW

Figure 1



8.3.3. STEPS WITHIN THE CONCESSION FLOW

Part 1 Part 1 NONCONFORMANCE DISCOVERED DURING EXECUTION OF FLG PO

1. Determine type of N/C (Defect): SCRAP, REWORK, or REPAIR or USE-AS-IS.
 - ⚠ Consult the Definitions.
 - SCRAP** ▶ Scrap the nonconformant product permanently.
 - REWORK** ▶ Rework the product i.a.w. suppliers' internal rework process.
 - REPAIR** ▶ Submit a concession request to FLG via **SHEET A - CONCESSION REQUEST**.
 - USE-AS-IS** ▶ Submit a concession request to FLG via **SHEET A - CONCESSION REQUEST**.

Part 2 Part 2a PREPARE CONCESSION REQUEST

1. Complete **SHEET A - CONCESSION REQUEST** starting at Section 1 and follow the instructions as described in 8.3.4. Sheet A.
2. Determine whether the defect is on a ordered product or on a next lower product before assembly:

N/C('s) (Defect) on Ordered Product?

- ▶ **1 N/C?**
Complete **SHEET B - 1-DEFECT**.
Follow the instructions as described in 8.3.4, Sheet B.
- ▶ **2 up to including 5 N/C's?**
Complete for all N/C's **SHEET C - MULTI-DEFECT**
Follow the instructions as described in 8.3.4, Sheet C.
⚠ **Max. 5 N/C's (Defects) per concession request allowed.**
If more than 5 N/C's, issue additional concession request.

N/C (Defect) on Next Lower product before Assembly?

- Complete **SHEET B - CONCESSION REQUEST: 1-DEFECT**.
Follow the instructions as described in 8.3.4, Sheet B.
⚠ **Only 1 N/C (Defect) per concession request allowed.**
If more than 1 N/C, issue an additional concession request.

Part 2 Part 2b SUBMITTAL CONCESSION REQUEST

3. Submit the completed concession request in Excel-format to the responsible FLG buyer.

Part 3 Part 3 FLG DISPOSITION

1. **Response to supplier:** FLG will response by returning the updated concession request file to the supplier. Possible status answers as detailed on sheet A:
 - ▶ Status "**Rejected**": Concession request rejected and closed by FLG. The status will be stated at each used defect sheet.
 - ▶ Status "**Returned for correction by supplier**": Concession request returned to supplier to add and/or correct details. When completed the concession request can be resubmitted to the responsible FLG buyer. (See Part 2b).
 - ▶ Status "**Accepted by FLG for MRB process**": The concession request is taken into consideration and handled further i.a.w. Part 3 & 4. The data in the returned Sheet A is frozen.

When required, FLG will request for corrective actions to eliminate the root cause of the nonconformance.

2. **Disposition preparation:** FLG will prepare and approve 1 or more dispositions to cover all Lot/Serial Numbers detailed in the concession request. The disposition decision may be one of the following types:

USE-AS-IS	SHEET D_n - SUPPLIER CONCESSION DISPOSITION NOTIFICATION - USE-AS-IS
SCRAP	SHEET D_n - SUPPLIER CONCESSION DISPOSITION NOTIFICATION - SCRAP
REPAIR	SHEET D_n - SUPPLIER CONCESSION DISPOSITION NOTIFICATION - REPAIR

3. **Forward disposition to supplier:** FLG will forward the concession request file with the added

disposition notification sheet(s) to the supplier. Each notification will include a Pdf-attachment with evidence of the MRB-Approval.

Part 4 DISPOSITION EXECUTION BY SUPPLIER

1. **Disposition execution by supplier:** Depending on the type of disposition, a selection of the following steps shall be performed after receipt of the disposition notification(s):

USE-AS-IS

- | | |
|----------------|--|
| <i>Part 4a</i> | 1. USE-AS-IS STATEMENT: When a USE-AS-IS Notification is received from FLG, return the signed USE-AS-IS Shipment Statement together with the related products as confirmation that the Disposition Notification Requirements are met. |
| | 2. IDENTIFICATION LABEL: Each product shall be identified by an identification label, stating: Part Number, Description, Lot/Serial Number(s) and FLG-QIS Nonconformance ID('s) applicable for the product(s). |
| <i>Part 4c</i> | 3. COC WITH REFERENCE TO MRB-AUTHORIZATION-ID: Forward together with the shipment of the USE-AS-IS products a CoC clearly referring to the Concession-ID and applicable Lot/Serial Numbers. |
| | 4. PACKING SLIP: State clearly the FLG-QIS Nonconformance ID('s) on the Packing Slip. |

SCRAP

- | | |
|----------------|---|
| <i>Part 4d</i> | 1. SCRAP STATEMENT: When a SCRAP Notification is received from FLG, forward by return email the SCRAP notification with the signed SCRAP Statement as confirmation that the Disposition Notification Requirements are met. |
|----------------|---|

REPAIR

- | | |
|----------------|---|
| | 1. EXECUTE REPAIR CONTROL SHEET (RCS): When a REPAIR Notification is received from FLG, complete the REPAIR strictly i.a.w. with Sheet E – RCS.
⚠ Deviations from the RCS mean Scrap or a follow-up Defect Status and Next Disposition on the same FLG-QIS Nonconformance ID. |
| <i>Part 4b</i> | 2. REPAIR PARTS STATEMENT: When the REPAIR is completed, return the REPAIR signed Shipment Statement together with the related products as confirmation that the Disposition Notification Requirements are met. |
| | 3. IDENTIFICATION LABEL: Each product shall be identified by an identification label, stating: Part Number, Description, Lot/Serial Number(s) and FLG-QIS Nonconformance ID('s) applicable for the product(s). |
| <i>Part 4b</i> | 4. RCS: Return also a copy of the completed RCS together with the REPAIR Parts Shipment. |
| <i>Part 4c</i> | 5. COC WITH REFERENCE TO MRB-AUTHORIZATION-ID: Forward together with the shipment of the REPAIR products a CoC clearly referring to the Concession-ID and applicable Lot/Serial Numbers. |
| | 6. PACKING SLIP: State clearly the FLG-QIS Nonconformance ID('s) on the Packing Slip. |

UNSUCCESSFUL REPAIR OF 1 OR MORE LOT/SERIAL NUMBERS

1. When repair operations can't be successfully executed for 1 or more Lot/Serial Numbers as defined per RCS, these Lot/Serial Numbers shall be mentioned on the RCS with a clear description of the nonconformance. Forward a copy of the RCS to the responsible buyer. When applicable, additional information can be linked as an attachment.
2. FLG will forward a subsequent disposition for the failed products. The subsequent disposition will be added as a Next Disposition Notification to the existing disposition request file.

8.3.4. DETAILED INSTRUCTION

This section describes how to complete the fill-in boxes which need to be completed by the supplier during the different stages of the concession process.

Explanation of the colour of the boxes in the sheets:

Yellow:	To be completed by Supplier.
Transparent:	To be completed automatically by a build-in link to other boxes.
Grey:	Not (yet) to be answered.
Orange	To be completed by the supplier.

A SHEET A - CONCESSION REQUEST		
Item	Subject	Description
1 SUPPLIER - GENERAL DATA		
S.10	Supplier Name:	Indicate the Name of the supplier. (Should be the same as printed on FLG PO).
S.11	Supplier Address:	Indicate the Address of the supplier. (Should be the same as printed on FLG PO). If a line not necessary, place a " -"

A SHEET A - CONCESSION REQUEST		
Item	Subject	Description
2 SUBMITTED NONCONFORMANCE - GENERAL DATA		
S.20	FLG Program Name:	Select appropriate Program Name from dropdown list.
S.21	Supplier's Nonconformance Control ID:	Indicate supplier's unique Nonconformance Control ID.
S.22	Date of Nonconformance:	Indicate the Date when the Nonconformance occurred. Format: DD-MMM-YY (English).
S.23	Supplier's Job Traveler ID:	Indicate supplier's unique Job Traveler ID. (Can also be recognised as e.g. Router, Job Card, etc).
S.24	Responsibility Nonconformance:	Select the Organisation who is responsible for the Nonconformance. Select supplier or FLG.
S.25	Supplier Quality Representative:	Indicate the First and Last Name of the Supplier Quality Representative authorizing the concession request to FLG.
S.26	Email Supplier Contact:	Indicate the Email address of the supplier contact.
S.27	Supplier Comments:	Indicate any Comments, Suggestions etc. If none, indicate: N/A.
S.28	Submittal Date to FLG:	Indicate the concession request Submittal Date to FLG. Format: DD-MMM-YY (English).

A SHEET A - CONCESSION REQUEST		
Item	Subject	Description
3 ORDERED PART NUMBER		
S.30	Ordered P/N:	Indicate the P/N as defined on the FLG PO.
S.31	Ordered P/N Revision:	Indicate the P/N Revision as defined on the FLG PO. (On FLG's PO recognized as "Item Rev.").
S.32	Ordered Part Description:	Indicate the Part Description as listed on the FLG PO.
S.33	Technical Data ID('s) and Technical Data Revision Level(s) of Ordered P/N:	Indicate the Technical Data ID('s) and Technical Data Revision Level(s) of Ordered P/N. Drawing is listed on FLG's PO at: "Drawing ID" and "Last Draw Rev" and additional Technical Data, if applicable, at "Last EO". Technical Data can consist of 1 or more of the following documents: <ul style="list-style-type: none"> • Engineering Drawing • Parts List • Notes List • Engineering Change Data

Fokker Landing Gear B.V.

		<ul style="list-style-type: none"> • Engineer Order • Specification • Other Technical Data
S.34	Purchase Order ID:	<p>Indicate FLG PO No., followed by a dash "-" and the Version No. for the ordered product.</p> <p>Example: Po.No. consists of 9 digits (As example: 151006481) Version No. consists of 1 digit (As example:1) ► Notation: Purchase Order ID: 151006841-1</p>
S.35	Purchase Order Line:	Indicate FLG PO Line # for the ordered product. Recognized on FLG's PO as "Pos/Sq" (xx/x).
S.36	Ordered Quantity:	Indicate Quantity Ordered per PO Line.
S.37	Nonconformance concerns Next Lower P/N before Assembly in Ordered P/N:	<p>Select "No" if the Nonconformance concerns:</p> <ul style="list-style-type: none"> • The Ordered P/N, or • Next Lower P/N installed in Ordered P/N. <p>Select "Yes" if the Nonconformance concerns:</p> <ul style="list-style-type: none"> • Next Lower P/N before Assembly in Ordered P/N.
S.38	If "Yes" selected at S.37, indicate here the Next Lower Quantity before Assembly.	If "Yes" selected at S.37, indicate here the Next Lower Quantity before Assembly in Ordered P/N.

A SHEET A - CONCESSION REQUEST		
Item	Subject	Description
4	NONCONFORMING PART NUMBER	
S.40	Nonconforming P/N: (When "Yes" selected at S.37)	Indicate the Nonconforming P/N.
S.41	Ordered P/N Revision: (When "Yes" selected at S.37)	Indicate the Revision of the nonconforming P/N.
S.42	Part Description of Nonconforming P/N:	Indicate the Part Description of the Nonconforming P/N.
S.43	Technical Data ID('s) and Technical Data Revision Level(s) of Nonconforming P/N: (When "Yes" selected at S.37)	<p>Indicate the Technical Data ID('s) and Technical Data Revision Level(s) of Ordered P/N.</p> <p>Drawing is listed on FLG's PO at: "Drawing ID" and "Last Draw Rev" and additional Technical Data, if applicable, at "Last EO". Technical Data can consist of 1 or more of the following documents:</p> <ul style="list-style-type: none"> • Engineering Drawing • Parts List • Notes List) • Engineering Change Data • Engineer Order • Specification • Other Technical Data
S.44	Nonconforming Quantity:	Indicate Quantity of Nonconforming P/N.
S.45	Lot/Serial Number(s) of Nonconforming P/N:	<ul style="list-style-type: none"> • List 1 Lot Number for all Nonconforming P/N, or • List individual Serial Numbers for each Nonconforming P/N. <p>Serial numbers when applicable must be listed individual with the prefix. i.e. SP2341, SP2342, SP2346, etc.</p>
S.46	Previous Concessions for the Lot/Serial Numbers as listed in S.45:	If applicable, list here the previous FLG-QIS Nonconformance ID('s) for the Lot/Serial Numbers as listed in S.45. If not applicable, indicate "None".
S.47	Last Operation completed for Nonconforming P/N:	Indicate Operation ID & Description of the Last Operation of the Nonconforming P/N that is Successfully Completed

Fokker Landing Gear B.V.

S.48	Heat Treat completed for Nonconforming P/N:	in accordance with the requirements. Select "Yes" if Heat Treatment is already completed or "No" when Heat Treatment is not yet done or is not applicable.
S.49	If Processor caused Nonconformance, list Name & Address of Processor and Process Specification:	If Nonconformance caused by a Processor, indicate: <ul style="list-style-type: none"> Name & address of Processor; Name Process and Process Specification. If Nonconformance not caused by a Processor, indicate "N/A".



To select correct defect sheet(s) check:
8.3.2 SCHEMATIC REPRESENTATION OF THE CONCESSION FLOW

B SHEET B – CONCESSION REQUEST: 1-DEFECT		
Item	Subject	Description
8 DEFECT DESCRIPTION		
D.1.80	Nonconformance Title:	Indicate a Title that clearly defines what the Nonconformance is. (Maximum 50 characters).
D.1.81	Technical Data ID('s) and Technical Data Revision Level(s) of Nonconforming P/N:	Data linked to other boxes in SHEET A – CONCESSION REQUEST
D.1.82	Requirement per Technical Data:	Indicate the Requirement as listed in the Technical Data.
D.1.83	Discrepancy per Technical Data:	Indicate the Discrepancy relative to the Requirement.
D.1.84a	Defect Main Process Code:	Select the Defect Main Process Code that best describes the Nonconformance.
D.1.84b	Defect Process Code:	Select the Defect Process Code that best describes the Nonconformance.
D.1.85a	Cause Main Term Code:	Select the Cause Main Term Code that best describes the cause of the Nonconformance.
D.1.85b	Cause Code:	Select the Cause Code that best describes the cause of the Nonconformance.
D.1.85c	Cause Text:	Indicate here Additional Detailed Information related to the Cause of the Nonconformance.
D.1.86a	Corrective Action Code:	Select the Corrective Action Code that best describes the Corrective Action to eliminate the direct cause.
D.1.86b	Corrective Action Text:	Indicate here additional detailed information related to the Corrective Action to eliminate the direct cause.
D.1.87a	Number of added Attachment Files:	Indicate the number of Attachment Files linked to the Nonconformance in this Defect Sheet.
D.1.87b	List here the filenames of the included & send with this sheet:	List here the Filenames of the Attachments.

C SHEET C - MULTI-DEFECT description NC-x for this Request (x can by 1 to 5)		
Item	Subject	Description
8 DEFECT DESCRIPTION – PER NONCONFORMANCE		
D.M.80	Nonconformance Title:	Indicate a Title that clearly defines what the Nonconformance is. (Maximum 50 characters).
D.M.81	Quantity of Parts with this Nonconformance:	Indicate the Quantity of Parts with this Nonconformance. The Quantity listed here is a part of the total quantity as listed at D.M.73.
D.M.82	Lot/Serial Number(s) applicable to this Nonconformance:	Select the applicable Lot/Serial Number(s) from the range of Lot/Serial Number(s) listed at D.M.74.
D.M.83	Technical Data ID('s) and Technical Data Revision Level(s) of	Indicate the related Technical Data ID('s) and Technical Data Revision Level(s) of the Nonconforming P/N.

Fokker Landing Gear B.V.

	Nonconforming P/N:	Technical Data can consist of 1 or more of the following documents: <ul style="list-style-type: none"> • Engineering Drawing • Parts List • Notes List) • Engineering Change Data • Engineer Order • Specification • Other Technical Data
<i>D.M.84</i>	Requirement per Technical Data:	Indicate the Requirement as listed in the Technical Data.
<i>D.M.85</i>	Discrepancy per Technical Data:	Indicate the Discrepancy relative to the Requirement.
<i>D.M.86a</i>	Defect Main Process Code:	Select the Defect Main Process Code that best describes the Nonconformance.
<i>D.M.86b</i>	Defect Process Code:	Select the Defect Process Code that best describes the Nonconformance.
<i>D.M.87a</i>	Cause Main Term Code:	Select the Cause Main Term Code that best describes the cause of the Nonconformance.
<i>D.M.87b</i>	Cause Code:	Select the Cause Code that best describes the cause of the Nonconformance.
<i>D.M.87c</i>	Cause Text:	Indicate here Additional Detailed Information related to the Cause of the Nonconformance.
<i>D.M.88a</i>	Corrective Action Code:	Select the Corrective Action Code that best describes the Corrective Action to eliminate the direct cause.
<i>D.M.88b</i>	Corrective Action Text:	Indicate here additional detailed information related to the Corrective Action to eliminate the direct cause.
<i>D.M.89a</i>	Number of added Attachment Files:	Indicate the number of Attachment Files linked to the Nonconformance in this Defect Sheet.
<i>D.M.89b</i>	List here the filenames of the included & send with this sheet:	List here the Filenames of the Attachments.

D SHEET D - SUPPLIER CONCESSION NOTIFICATION		
Item	Subject	Description
15	SUPPLIER SHIPMENT STATEMENT for Concession-ID: <conc.id> <disp-type> <Request-type>	
<i>NU.15.3</i>	Name:	Indicate the Name of the Supplier Quality Representative authorizing the Supplier Shipment Statement.
	Date:	Indicate the Submittal Date to FLG.
	Signature:	Place here the Signature of the Supplier Quality Representative.
<i>NU.15.4</i>	Complete the sheet, print and include a signed copy with the shipment.	

E SHEET Ex – RCS-x (x can by 1 to 5)		
Item	Subject	Description
16	REPAIR CONTROL SHEET for Concession-ID: <conc.id>	
<i>Info</i>	Completion of RCS:	The RCS shall be used as a registration of the Repair Progress & Approvals in execution of the Repair. When Op. No. of ALL Lot/Serial Number(s) are successfully executed, date and sign or stamp by authorized person. If ANY Lot/Serial Number(s) are rejected, follow organization's nonconforming product control process and resubmit a concession request to FLG.
<i>NR16.11</i>	Date:	Indicate the Completion Date of the specific operation.
	Sign or Stamp:	Place here the Signature or the Stamp of the Authorized Quality Representative.

Fokker Landing Gear B.V.

NR16.12	Indicated Rejected Qty:	State the number of products for which the Repair has failed. If none state "0" or "zero".
NR16.13	Rejected Lot/Serial Nrs:	If applicable, indicate rejected Lot/Serial Number(s). If ALL Lot/Serial Number(s) repaired i.a.w. the RCS state: None.
NR16.14	Describe Current Defect Status of these products:	Describe here the Current Defect Status of the failed Lot/Serial Number(s). If No Lot/Serial Number(s) rejected state: None.