



Aviolandalaan 33
4631 RP Hoogerheide
P.O. Box 75
4630 AB Hoogerheide
The Netherlands

www.fokker.com

Title : **Delivery Instructions for Fokker Elmo Suppliers worldwide**

Issue date: 21 September 2022

Controlled : Fokker Elmo Procurement
Copy : <https://www.gknaerospace.com/en/Utilities/gkn-aerospace-suppliers/fokker/>

Issue number: 13-0
Report number: PROC17-003
Order number: n/a
Security class: **Unclassified**
Company / dept. : Fokker Elmo

Delivery Instructions

Summary

This document describes the required shipping documents and required incoterms and point of contacts when shipping material to Fokker Elmo from/out of a specific region.

In case of questions, comments or remarks about the instruction/requirements listed in this document, or to submit exceptions for Fokker Elmo approval, please contact:

Email: john.delaater@fokker.com
Phone: +31 (0)6 23718760

General remarks

- The delivery instructions in this document are applicable to all suppliers in receipt of a purchase order from Fokker Elmo and its subsidiaries.
- All instructions in this document are to be read as requirements (be)for(e) shipping and apply to all shipments made to Fokker Elmo and its subsidiaries, for which Fokker Elmo is responsible for the freight charges.
- Compliance to these Delivery Instructions is mandatory.
- Prepaid freight charges billed to Fokker Elmo are not accepted, unless otherwise agreed in writing between Fokker Elmo and Supplier.
- Supplier shall not insure shipments at the expenses of Fokker Elmo.

This document is subject of change. The latest revision shall be made available electronically on the company website <http://www.gkngroup.com/aerospace/supplier-info/fokker-elmo/pages/default.aspx>
Printed versions of this document are for reference only. It is therefore the responsibility of the person using this document to compare the issue date of the printed copy with the electronic issue on the company website.

Delivery Instructions for Fokker Elmo Suppliers Worldwide

prepared/department: Fokker Elmo Procurement: [Signature on File]	checked/department: Quality Assurance : [Signature on File]
original issue date:	approved/department: Director Procurement: [Signature on File]

Change Record

Issue	Date	Description of changes
01		Initial issue.
02		– 3.1 Packing List: Added: Number of items per batch code or date code need to be provided.
03		The following changes are added by DB Schenker: – Address Change for LAX – Los Angeles, – Contact Person Changed: for the USA Key Account Support.
04		Added: Contact details for Fokker Elmo India (Joint Venture with SASMOS)
05	29-Jun-2015	Issue update for supplier
06	31-Mar-2017	General Lay-out update. General changed: all Fokker Elmo email addresses, from domain 'fokkerelmo.com' into 'fokker.com'. E-mail address Fokker Elmo – Sasmos India, Fokker Elmo Turkey changed. Global transport process owner changed. VOI / consignment stock program process added requirements for packing list. CoC OEM requirements in case of distributor delivery added.
07	16-Feb-2018	CoC requirements moved to SQAR, see website https://www.gknaerospace.com/en/Utilities/gkn-aerospace-suppliers/fokker/ PoC adjustments URL references Instructions for European suppliers under FCA(supplier) for deliveries to Fokker Elmo NL
08	15-Oct-2018	Update addresses E-mail addresses for pre-alerts at direct shipments to FE-CN and FE-TR Correction direct shipments to FE-NL ex UK
09	15-Apr-2019	Name Gateway is changed into Tradeshift (whole document) Instruction Tradeshift Shipments (Page 8) E-mail addresses for invoices (shipping pages) Add facility Pune India (shipping pages) Decision matrix for shipping raw material (page 10)

10	<p>August 2019</p> <p>January 2020</p>	<p>Change record cont'd</p> <p>Text</p> <ul style="list-style-type: none"> - 3.1.7 Export Controlled Shipments - Fedex is changed into TNT/Fedex - Address change for Direct Shipments to China (Page 20/21) - Shipment process added for Origin Fort Worth Dallas, USA (page 20) - Remove FE-SIL (Fokker Elmo Sasmos Bangalore IN). FE-SIL has introduced separate instructions. Instructions for all other GKN Fokker Elmo facilities remain the same, including Fokker Elmo Pune India. <p>New:</p> <p>Add Ireland in chapter 4.8</p> <p>Add exception for direct shipments to TR not with Fedex!</p> <p>4.3 Shipping from Miami: Change forwarder</p>
11	December 2021	<p>Changed p.o.c.</p> <p>Changed VAT number</p>
12	July 2022	<p>Changed POC</p> <p>Direct shipments to GKN Fokker India FE-IN 3.1.5</p>
13	September 2022	<p>Delivery address DB Schenker Seattle 4.4, page 16</p> <p>CHANGES/ADJUSTMENTS ARE MARKED IN YELLOW</p>



Delivery Instructions for Fokker Elmo Suppliers Worldwide

Table of content

General remarks	1
1 Introduction	5
2 Fokker Elmo shipments – Required shipping documents	5
3 Fokker Elmo Shipments - Shipping Procedure	9
3.1 General requirements:	9
4 Fokker Elmo Shipping Instructions for Suppliers	13
4.1 Ship from: East side of the United States of America.....	13
4.2 Ship from: West side of the United States of America.....	14
4.3 Ship from: Miami Region (MIA).....	15
4.4 Ship from: Seattle Region (SEA)	16
4.5 Ship from: Canada Region	17
4.6 Ship from: Europe Region, except from Great Britain	18
4.7 Ship from: Great Britain Region	19
4.8 Ship from: India.....	20
4.9 Ship from: Origins, not mentioned in 4.1 - 4.8	21
5 Aircraft on ground (AOG) Express shipments	22
6 Communication matrix for Global Transport	23



Delivery Instructions for Fokker Elmo Suppliers Worldwide

1 INTRODUCTION

This document describes all documents necessary to ensure that shipping to Fokker Elmo is executed correct and complete. As requirements vary per geographic location,

2 FOKKER ELMO SHIPMENTS – REQUIRED SHIPPING DOCUMENTS

- Certificate of Compliance see column 2.1
- Invoice, See column 2.2
- Packing List, see column 2.3
- Shipping Letter of Instruction, see 2.4
- Tradeshift Shipment Manifest, see column 2.5; Applicable to Tradeshift users only

Required Documents	2.1 Certificate of Conformance (CoC)	
How to be delivered with shipment	Certificate of Conformance (COC) is required to be packed <u>in</u> the specific box	
How to be delivered separate from shipment	Not applicable	
Content	SQAR; (Supplier Quality Assurance Requirements), see URL: http://www.gkngroup.com/aerospace/supplier-info/fokker-elmo/documents/supplier quality assurance requirements rev7.pdf	

Delivery Instructions for Fokker Elmo Suppliers Worldwide

Required Documents	2.2 Invoice	2.3 Packing List
How to be delivered with shipment	Three (3) printed versions of the invoice in a document pouch must be included and affixed on the EXTERIOR of the box(es). Photocopies are not allowed because of customs regulations.	One (1) Packinglist in the box, One (1) Packinglist (in the document pouch) must be included and affixed on the EXTERIOR of the box(es).
How to be delivered separate from shipment	Send the invoices to the "Bill to" address by e-mail (=preferred) or by normal mail. See Shipping instructions for addresses.	Not applicable
Content	The elements below must be stated clearly and completely: <ul style="list-style-type: none"> - Name and/or logo of supplier - Invoice number and date - Date of shipment - Fokker Elmo Purchase Order number 1) - Fokker Elmo Purchase Order Line number 2) Fokker Elmo is not able to trace goods without a Line number! <ul style="list-style-type: none"> - Fokker Elmo item number(s) of that purchase order - Part number/item number of supplier - Quantity per item (with unit of measurement) 3) - "Confirmed" price per item (including currency) - Total amount (including currency; Quantity x Price per item number - VAT percentage(s) (separately) - VAT amount(s) (separately) - HS (Harmonized System) code - ECCN code - Country of Origin 	<ul style="list-style-type: none"> - Correct Fokker Elmo Address - Purchase Order Number - Purchase Order Line Number. Fokker Elmo is not able to trace goods without a Line number! - Fokker Elmo Item Number(s) - Supplier part number(s) of that purchase order - Quantity per Item - Unit of measurement (UoM) - Production batch number or date code - the delivered quantity per batch number or date code - HS (Harmonized System) code - ECCN code - Country of Origin
Remark 1	1) Do not refer to more than one purchase order number on each invoice. 2) The purchase order line number must be placed separately from the purchase order number. For example 12345-10 is incorrect; the correct way is 12345 line 10. 3) The unit of measurement must be the same as the measurement reflected on the Fokker Elmo Purchase Order.	Be sure that the goods and quantities on the packing list(s) are matching with the content of the physical shipment AND the (commercial) invoice. Accuracy between CoC and physical parts must be 100%. Deviations will lead into wrong declarations with required scrap as result.
Remark 2	Be sure that the goods and quantities on invoice(s) are matching with the content of the physical shipment. Accuracy between CoC and physical parts must be 100%. Deviations will lead into wrong declarations with required scrap as result.	Be sure that the goods and quantities on the packing list(s) are matching with the content of the physical shipment AND the (commercial) invoice. Accuracy between CoC and physical parts must be 100%. Deviations will lead into wrong declarations with required scrap as result.
Remark 3	In case of a credit note refer to the concerned Purchase Order and line number and the original invoice number. Also state the Fokker Elmo NCR number if applicable. Fokker Elmo item number; the OEM number and Quantity	In case of shipments in accordance with the VOI/Consignment stock program, mention the VOI contract number as reference on the packing list.

Delivery Instructions for Fokker Elmo Suppliers Worldwide

Required Documents	2.4 Shipping Letter of Instructions (SLI)	2.5 Tradeshift Shipment Manifest (Applicable for Tradeshift users only)
How to be delivered with shipment	Send SLI to the related DBSchenker Hub. In case the seller delivers under FCA(Hub DBSchenker), the shipping and tracking information of the related forwarder has to be filled out on the SLI (Inland carrier Name and tracking or PRO nr.)	One (1) Tradeshift Shipment Manifest, must be included in the document pouch and affixed on the EXTERIOR of the box(es). See instruction 2.5.1.
How to be delivered separate from shipment	Not applicable	Not applicable
Content	Use template provided by DBSchenker <ul style="list-style-type: none"> - Shipper - Dimensions shipment (Weight/volume) (Accuracy Weight/Volume must be 100%!) <ul style="list-style-type: none"> - Final Fokker Elmo destination - Shipper's reference no - Description goods - Number of shipping units / boxes - In case of FCA(Hub) the track & trace information of the related carrier 	Shipment manifest is prepared and printed on Tradeshift and contains the following information: <ul style="list-style-type: none"> - Final Fokker Elmo Destination - Applicable pick-up address of vendor - number of packages/volume and weight - Purchase Order number - Purchase Order Line number - Fokker Elmo's item number(s) - Supplier part number(s) of that purchase order - Shipped Quantity per item - Unit of measurement (UoM)
Remark 1	DIRECT SHIPMENTS to the Fokker Elmo destinations are NOT allowed. Exceptions: 1. Only after approval of Fokker Elmo Procurement Department / Supply Chain Management 2. Deliveries DDU(Hoogerheide), DAP(Hoogerheide) or FCA(Hoogerheide) Costs caused by unapproved direct shipments will be claimed!	Be sure that the goods and quantities on the packing list(s) / commercial invoice and Tradeshift Shipment Manifest are matching with the content of the physical shipment
Remark 2	From logistic perspective it is not allowed to consolidate multiple boxes with different final destinations into one box or shipment. An SLI is required per final destination. "Mixed" shipments will be returned to consigner, on account of the supplier, for repacking.	Every shipment prepared on Tradeshift receives a unique S?? number. Mark all separate packages which belong to one S??xxxxxx-number with this number.

Delivery Instructions for Fokker Elmo Suppliers Worldwide

2.5.1 Instruction for completing a Tradeshift shipment with DB Schenker



Print out the Shipment manifest/ complete the SLI and print your packingslip and invoices
 Combine above documents in a document pouch and put outside of the parcel
 Mark every individual package with the referring SHPnumber



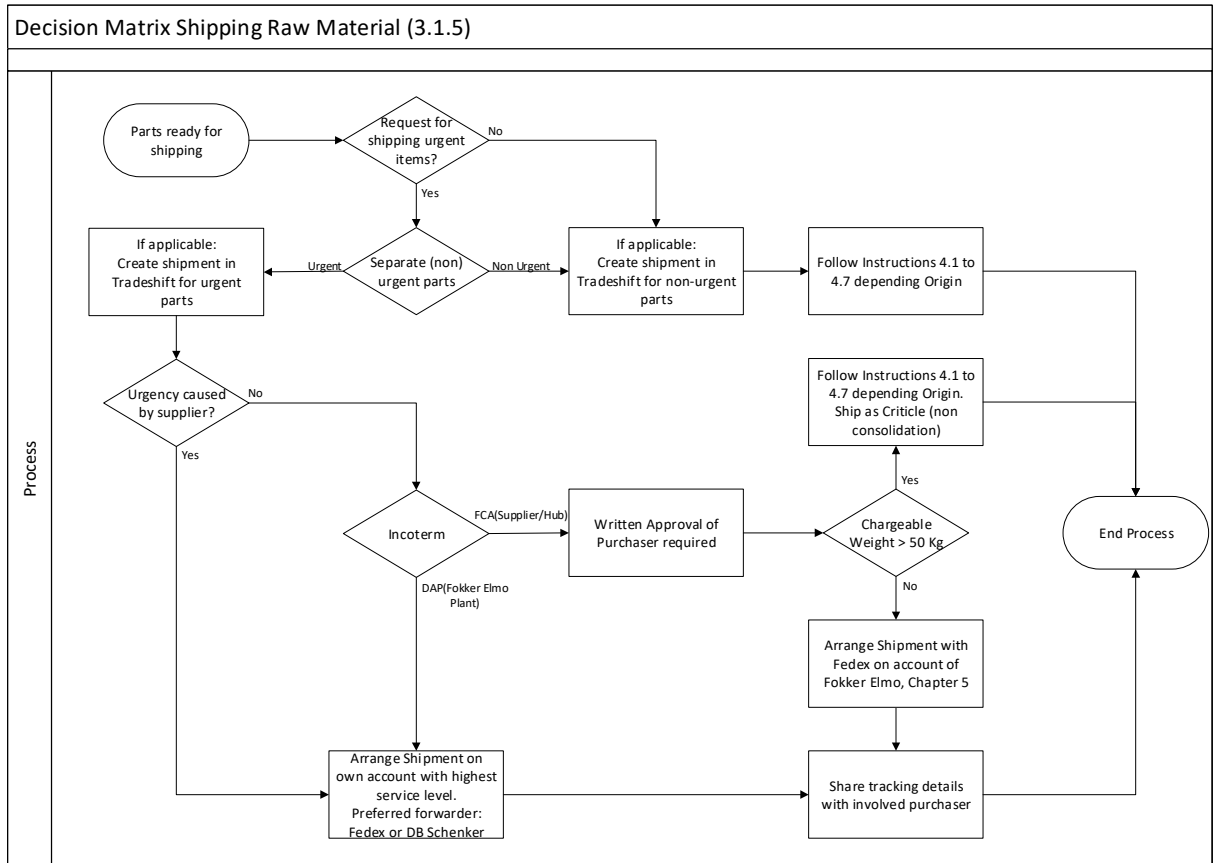
Delivery Instructions for Fokker Elmo Suppliers Worldwide

3 FOKKER ELMO SHIPMENTS - SHIPPING PROCEDURE

3.1 General requirements:

Process:	Requirements and descriptions
3.1.1. Packaging	<ol style="list-style-type: none"> Vendors shall package products in a way that provides protection from damage and corrosion during transport, so that the goods arrive at Fokker Elmo destinations in the same condition as when they were packaged. Miscellaneous small parts have to be packed in a box. Jiffy bags are prohibited to ship material to Fokker Elmo. Each package unit has to wear a label containing the following information: <ol style="list-style-type: none"> Purchase Order number Purchase Order Line number Fokker Elmo item number Delivered Quantity Unit of Measurement (UoM) Production Batch number or Date Code Products delivered with multiple date codes, covering the PO demand, need to be packed/grouped separately per date code/Batch.
3.1.2. Prepare Shipment	<ol style="list-style-type: none"> Put 1 packing list inside the box Affix document pouch on the exterior of the box. Content of pouch: <ol style="list-style-type: none"> 3 copies of invoices in the document pouch 1 packing list in the document pouch Label the boxes with the final destination (not only on docs in the pouch!) PO + PO-line number is clearly mentioned on all documents. It is not able to trace shipments without line number! Each shipping unit (box, pallet, container etc.) contains Purchase Orders with the same final destination only. <u>Do not ship parts or boxes with various final destinations into one shipment!</u> Send Shipping letter of Instructions (SLI) to the applicable DB Schenker Hub. The content of the shipment has to be the same as manifested on the packing lists and invoices for 100%.
3.1.3. Exceptions (tooling; equipment; consumables etc)	<p>Customs Regulations related to shipping of Non Product Related Spend or otherwise (f.e. tooling and or equipment)</p> <p>For final destination:</p> <p><u>FE-TR:</u> Separate package, allowed to consolidate</p> <p><u>FE-CN:</u> Separate shipment/HAWB, <u>not allowed in consolidation together with production related material!</u></p> <p>Reference PO#: FECN-xxxx-xxxx-x (=PO for consumables and tooling)</p> <p><u>FE-NL:</u> no restrictions</p> <p><u>FE-SIL:</u> Fokker Intercompany material need to be shipped by a separate HAWB, due to Export Oriented Unit (EOU)</p> <p><u>FE-IN:</u> Fokker Intercompany material need to be shipped by a separate HAWB, due to Export Oriented Unit (EOU)</p>
3.1.4. Hazardous Material	<p>Follow all applicable state-and federal mandates for shipping hazardous material. Shipping units must be labelled according to regulations. Hazardous Material have to be shipped separately.</p>

Process:	Requirements and descriptions
3.1.5. Direct Single Shipments	<p><i>In principle, DIRECT SHIPMENTS to the Fokker Elmo destinations are NOT allowed. Exceptions: (See decision matrix below)</i></p> <ol style="list-style-type: none"> 1. European suppliers with deliveries to Fokker Elmo Netherlands, under FCA(Supplier). 2. Deliveries under DDU(Hoogerheide); DAP(HHD); FCA(HHD) 3. Deliveries DAP(Langfang) or DDU(Langfang) <i>For direct shipments to Langfang; send pre-alert to FE-CN to fe-cn.pur@fokker.com.</i> 4. Deliveries DAP(Izmir) or DDU(Izmir); send pre-alert to FE-TR to purchase.tr@fokker.com 5. Deliveries DAP(Pune) or DDU(Pune) <i>For direct shipments to Pune; send pre-alert to FE-IN to pune.import@fokker.com.</i> 6. Others after approval of Fokker Elmo Procurement Department or Transport Management. <p><i>At Direct Shipments: label shipments as described on page AOG/Express shipments.</i></p> <p><i>Costs caused by unapproved direct shipments will be claimed! See also decision matrix Shipping Raw Material underneath</i></p>
3.1.6. AOG (Critical or Express) shipments	<p><i>For AOG; Critical; Express shipments on the account of Fokker Elmo, a written approval from Fokker Elmo is required!</i></p>
3.1.7. Export Controlled Shipments	<p><i>If export controlled shipments require an export license, please be aware that local branches of Schenker might be used. They need to be added to the export licenses as intermediate consignees or foreign freight forwarders. Fokker Elmo sites concerned can provide the details as required.</i></p> <p><i>In case details are known of DB Schenker BV (NL) or Schenker Arkas (TR) it can be added to the text.</i></p>



3.2 Shipping

Process:	FCA(Supplier Premises)
3.2.1. Pick-Up request	<p>Please contact one of the appointed DB Schenker Hub nearest to your facility to arrange pick-ups. (see chapter 4. Shipping Instructions) Consolidate daily shipments to avoid multiple pick-up requests on one day.</p> <p><u>Specific for European Suppliers for deliveries to Fokker Elmo Netherlands only:</u> Request Pick-up at Fedex, see 4.6 and 4.7</p>

Process:	FCA(Hub DB Schenker) - DDU(Hub DB Schenker) – DAP(Hub DB Schenker)
3.2.2. Deliveries	<p>Deliver your products to the applicable delivery address (DB Schenker Hub) in accordance with the data on the pages for Shipping Instructions in Chapter 4. Provide tracking# to the related hub (see POC Hub) The shipping and tracking information of the related forwarder has to be filled out on the SLI.</p>

Process:	DDU(Hoogerheide) – DAP(Hoogerheide) – FCA(Hoogerheide)
3.2.3. Deliveries	<p>Deliver your products to the applicable delivery address in accordance with the data on the pages for Shipping Instructions Chapter 4. Provide tracking# to the Fokker Elmo destination (see inbound department POC FE) The shipping and tracking information of the related forwarder has to be filled out on the SLI.</p>



Delivery Instructions for Fokker Elmo Suppliers Worldwide

4 FOKKER ELMO SHIPPING INSTRUCTIONS FOR SUPPLIERS

4.1 Ship from: East side of the United States of America

Origin	Supplier Location	Final Dest./ Incoterm	Bill to address	Ship to Address
USA	East USA	FE-NL Incoterm: all	Fokker Elmo B.V. (Attn. Finance Department) PO Box 75 4630 AB Hoogerheide The Netherlands	Fokker Elmo B.V. Netherlands c/o Schenker Inc./ MRZ Trucking Corp. 179-02 150ft Ave. Jamaica, NY 11434 +1 718 244 8914
		Email to:	invoices.fenl@fokker.com	
		Notes:	None.	
USA	East USA	FE-CN Incoterm: all	Fokker Elmo B.V. (Attn. Finance Department) PO Box 62 4630 AB Hoogerheide The Netherlands	Fokker Elmo China Co. Ltd. c/o Schenker Inc./ MRZ Trucking Corp. 179-02 150ft Ave. Jamaica, NY 11434 +1 718 244 8914
		Email to:	invoices.fecn@fokker.com	
		Notes:	Use plastic or "treated" (IPPC) pallets for all cargo with final destination FE-CN. For more information ask your POC at FE.	
USA	East USA	FE-TR Incoterm: all	Fokker Elmo Havacilik Sanayi ve Ticaret Limited Sirketi Allowed abbreviation: Fokker Elmo Hav.San.ve Tic.Ltd.Sti Ege Serbest Bölgesi, Sadi Sokak No: 10 35410 Gaziemir – Izmir Turkey	Fokker Elmo Hav.San.ve Tic.Ltd.Sti Aegean Free Zone, Turkey c/o Schenker Inc. 179-02 150th Ave. Jamaica, NY 11434 +1 718 244 8914
		E-mail to:	invoices.fetr@fokker.com	
		Tax ID:	388 059 2095	
		Notes:	<ul style="list-style-type: none"> - Always provide (Commercial) Invoice. For custom purposes a pro-forma invoice is NOT allowed. - Turkey has very strict custom regulations. Even a typing error can result into a blocked shipment. Please be very accurate with preparing the documentation. 	
USA	East USA	FE-IN Incoterms: all	GKN Fokker Elmo India Pvt. Ltd Block G, Embassy Industrial Park, Plot no.A-79 MIDC Chakan Industrial Area, Phase II Pune, Maharashtra, 401501 India	GKN Fokker Elmo India Pvt. Ltd. Pune c/o Schenker Inc./ MRZ Trucking Corp. 179-02 150ft Ave. Jamaica, NY 11434 +1 718 244 8914
		Email to:	Shailesh.bhalerao@fokker.com	
		Tax ID#	27AAHCG5063B1ZU	
		Notes:		
USA	East USA	POC-HUB	POC DBSchenker HUB JFK: 1. Daria Delia Tel: +1 347 535 8327 Daria.delia@dbschenker.com 2. Jacqueline Devivo Tel: +1 347 535 8322 jacqueline.devivo@dbschenker.com	USA Key Account Support: Local Account Manager Arturo Gamez Tel: +1 305 439 8298 Arturo.gamez@dbschenker.com



Delivery Instructions for Fokker Elmo Suppliers Worldwide

4.2 Ship from: West side of the United States of America

Origin	Supplier Location	Final Dest./ Incoterm	Bill to address	Ship to Address
USA	West USA	FE-NL Incoterm: all	Fokker Elmo B.V. (Attn. Finance Department) PO Box 75 4630 AB Hoogerheide The Netherlands	Fokker Elmo B.V. Netherlands c/o DBSchenker Inc. 990 East 233rd Street Carson CA 90745
		Email to:	invoices.fenl@fokker.com	
		Notes:	None.	
USA	West USA	FE-CN Incoterm: all	Fokker Elmo B.V. (Attn. Finance Department) PO Box 62 4630 AB Hoogerheide The Netherlands	Fokker Elmo China Co.Ltd. c/o DBSchenker Inc. 990 East 233rd Street Carson CA 90745
		Email to:	invoices.fecn@fokker.com	
		Notes:	Use plastic or "treated" (IPPC) pallets for all cargo with final destination FE-CN. For more information ask your POC at FE.	
USA	West USA	FE-TR Incoterm: all	Fokker Elmo Havacilik Sanayi ve Ticaret Limited Sirketi Allowed abbreviation: Fokker Elmo Hav.San.ve Tic.Ltd.Sti Ege Serbest Bölgesi, Sadi Sokak No: 10 35410 Gaziemir – Izmir Turkey	Fokker Elmo Hav.San.ve Tic.Ltd.Sti Aegean Free Zone, Turkey c/o DBSchenker Inc. 990 East 233rd Street Carson CA 90745
		E-mail to:	invoices.fetr@fokker.com	
		Tax ID:	388 059 2095	
		Notes:	<ul style="list-style-type: none"> - Always provide (Commercial) Invoice. For custom purposes a pro-forma invoice is NOT allowed. - Turkey has very strict custom regulations. Even a typing error can result into a blocked shipment. Please be very accurate with preparing the documentation. 	
USA	East USA	FE-IN Incoterms: all	GKN Fokker Elmo India Pvt. Ltd Block G, Embassy Industrial Park, Plot no.A-79 MIDC Chakan Industrial Area, Phase II Pune, Maharashtra, 401501 India	GKN Fokker Elmo India Pvt. Ltd. Pune c/o DBSchenker Inc. 990 East 233rd Street Carson CA 90745
		Email to:	Shailesh.bhalerao@fokker.com	
		Tax ID#	27AAHCG5063B1ZU	
		Notes:		
USA	West USA	POC-HUB	POC DBSchenker HUB LAX: 1. Cher Lee Madrid Tel: +1 310 221 3228 cher.madrid@dbschenker.com 2. Rosa Arriola Tel: +1 310 221 3229 Rosa.arriola@dbschenker.com	3. Blanca Scaglione Tel: +1 323 908 2644 blanca.scaglione@dbschenker.com USA Key Account Support: Local Account Manager Arturo Gamez Tel: +1 305 439 8298 arturo.gamez@dbschenker.com



Delivery Instructions for Fokker Elmo Suppliers Worldwide

4.3 Ship from: Miami Region (MIA)

Origin	Supplier Location	Final Dest./ Incoterm	Bill to address	Ship to Address
USA	MIA	FE-NL Incoterm: all	Fokker Elmo B.V. (Attn. Finance Department) PO Box 75 4630 AB Hoogerheide The Netherlands	Fokker Elmo B.V. Netherlands c/o DBSchenker Inc. 1801 NW 135th Ave - Ste 100, Miami, FL 33182
		Email to:	invoices.fenl@fokker.com	
		Notes:	None.	
USA	MIA	FE-CN Incoterm: all	Fokker Elmo B.V. (Attn. Finance Department) PO Box 62 4630 AB Hoogerheide The Netherlands	Fokker Elmo China Co.Ltd. c/o DBSchenker Inc. 1801 NW 135th Ave - Ste 100, Miami, FL 33182
		Email to:	invoices.fecn@fokker.com	
		Notes:	Use plastic or "treated" (IPPC) pallets for all cargo with final destination FE-CN. For more information ask your POC at FE.	
USA	MIA	FE-TR Incoterm: all	Fokker Elmo Havacilik Sanayi ve Ticaret Limited Sirketi Allowed abbreviation: Fokker Elmo Hav.San.ve Tic.Ltd.Sti Ege Serbest Bölgesi, Sadi Sokak No: 10 35410 Gaziemir – Izmir Turkey	Fokker Elmo Hav.San.ve Tic.Ltd.Sti Aegean Free Zone, Turkey c/o DBSchenker Inc. 1801 NW 135th Ave - Ste 100, Miami, FL 33182
		E-mail to:	invoices.fetr@fokker.com	
		Tax ID:	388 059 2095	
		Notes:	<ul style="list-style-type: none"> - Always provide (Commercial) Invoice. For custom purposes a pro-forma invoice is NOT allowed. - Turkey has very strict custom regulations. Even a typing error can result into a blocked shipment. Please be very accurate with preparing the documentation. 	
USA	East USA	FE-IN Incoterms: all	GKN Fokker Elmo India Pvt. Ltd Block G, Embassy Industrial Park, Plot no.A-79 MIDC Chakan Industrial Area, Phase II Pune, Maharashtra, 401501 India	GKN Fokker Elmo India Pvt. Ltd. Pune c/o DBSchenker Inc. 1801 NW 135th Ave - Ste 100, Miami, FL 33182
		Email to:	Shailesh.bhalerao@fokker.com	
		Tax ID#	27AAHCG5063B1ZU	
		Notes:		
USA	MIA	POC-hub MIA	Group e-mail: mia.aeroparts@dbschenker.com Group phone: +1 305 639 5200 POC DBSchenker MIA: 1. Anne Cedeno Tel: +1 305 639 5315 anne.cedeno@dbschenker.com 2. Pauline Allen Tel: +1 305 639 5218 Pauline.allen@dbschenker.com	USA Key Account Support: Local account manager Arturo Gamez Tel: +1 305 439 8298 Arturo.gamez@dbschenker.com



Delivery Instructions for Fokker Elmo Suppliers Worldwide

4.4 Ship from: Seattle Region (SEA)

Origin	Supplier Location	Final Dest./ Incoterm	Bill to address	Ship to Address
USA	SEA	FE-NL Incoterm: all	Fokker Elmo B.V. (Attn. Finance Department) PO Box 75 4630 AB Hoogerheide The Netherlands	Fokker Elmo B.V. Netherlands c/o DBSchenker Inc. 855 S 192 nd St Ste 300 Dock Doors 13 – 16 Seatac, WA 98148
		Email to:	invoices.fenl@fokker.com	
		Notes:	None.	
USA	SEA	FE-CN Incoterm: all	Fokker Elmo B.V. (Attn. Finance Department) PO Box 62 4630 AB Hoogerheide The Netherlands	Fokker Elmo China Co.Ltd. c/o DBSchenker Inc. 855 S 192 nd St Ste 300 Dock Doors 13 – 16 Seatac, WA 98148
		Email to:	invoices.fecn@fokker.com	
		Notes:	Use plastic or "treated" (IPPC) pallets for all cargo with final destination FE-CN. For more information ask your POC at FE.	
USA	SEA	FE-TR Incoterm: all	Fokker Elmo Havacilik Sanayi ve Ticaret Limited Sirketi Allowed abbreviation: Fokker Elmo Hav.San.ve Tic.Ltd.Sti Ege Serbest Bölgesi, Sadi Sokak No: 10 35410 Gaziemir – Izmir Turkey	Fokker Elmo Hav.San.ve Tic.Ltd.Sti Aegean Free Zone, Turkey c/o DBSchenker Inc. 855 S 192 nd St Ste 300 Dock Doors 13 – 16 Seatac, WA 98148
		E-mail to:	invoices.fetr@fokker.com	
		Tax ID:	388 059 2095	
		Notes:	<ul style="list-style-type: none"> - Always provide (Commercial) Invoice. For custom purposes a pro-forma invoice is NOT allowed. - Turkey has very strict custom regulations. Even a typing error can result into a blocked shipment. Please be very accurate with preparing the documentation. 	
USA	East USA	FE-IN Incoterms: all	GKN Fokker Elmo India Pvt. Ltd Block G, Embassy Industrial Park, Plot no.A-79 MIDC Chakan Industrial Area, Phase II Pune, Maharashtra, 401501 India	GKN Fokker Elmo India Pvt. Ltd. Pune c/o DBSchenker Inc. 855 S 192 nd St Ste 300 Dock Doors 13 – 16 Seatac, WA 98148
		Email to:	Shailesh.bhalerao@fokker.com	
		Tax ID#	27AAHCG5063B1ZU	
		Notes:		
USA	SEA	POC-HUB	POC DBSchenker SEA: 1. Seattle Exports Tel: +1 206 763 5618 seattleexports@dbschenker.com	USA Key Account Support: Local account manager Arturo Gamez Tel: +1 305 439 8298 Arturo.gamez@dbschenker.com



Delivery Instructions for Fokker Elmo Suppliers Worldwide

4.5 Ship from: Canada Region

Origin	Supplier Location	Final Dest./ Incoterm	Bill to address	Ship to Address
Canada	Canada	FE-NL Incoterm: all	Fokker Elmo B.V. (Attn. Finance Department) PO Box 75 4630 AB Hoogerheide The Netherlands	Fokker Elmo B.V. Netherlands c/o DBSchenker of Canada Ltd 2100 Reverchon Avenue Dorval Quebec H9P 2S7 Canada
		Email to:	invoices.fenl@fokker.com	
		Notes:	None.	
Canada	Canada	FE-CN Incoterm: all	Fokker Elmo B.V. (Attn. Finance Department) PO Box 62 4630 AB Hoogerheide The Netherlands	Fokker Elmo China Co.Ltd. c/o DBSchenker of Canada Ltd 2100 Reverchon Avenue Dorval Quebec H9P 2S7 Canada
		Email to:	invoices.fecn@fokker.com	
		Notes:	Use plastic or "treated" (IPPC) pallets for all cargo with final destination FE-CN. For more information ask your POC at FE.	
Canada	Canada	FE-TR Incoterm: all	Fokker Elmo Havacilik Sanayi ve Ticaret Limited Sirketi Allowed abbreviation: Fokker Elmo Hav.San.ve Tic.Ltd.Sti Ege Serbest Bölgesi, Sadi Sokak No: 10 35410 Gaziemir – Izmir Turkey	Fokker Elmo Hav.San.ve Tic.Ltd.Sti Aegean Free Zone, Turkey c/o DBSchenker of Canada Ltd 2100 Reverchon Avenue Dorval Quebec H9P 2S7 Canada
		E-mail to:	invoices.fetr@fokker.com	
		Tax ID:	388 059 2095	
		Notes:	<ul style="list-style-type: none"> - Always provide (Commercial) Invoice. For custom purposes a pro-forma invoice is NOT allowed. - Turkey has very strict custom regulations. Even a typing error can result into a blocked shipment. Please be very accurate with preparing the documentation. 	
Canada	Canada	FE-IN Incoterms: all	GKN Fokker Elmo India Pvt. Ltd Block G, Embassy Industrial Park, Plot no.A-79 MIDC Chakan Industrial Area, Phase II Pune, Maharashtra, 401501 India	GKN Fokker Elmo India Pvt. Ltd. Pune c/o DBSchenker of Canada Ltd 2100 Reverchon Avenue Dorval Quebec H9P 2S7 Canada
		Email to:	Shailesh.bhalerao@fokker.com	
		Tax ID#	27AAHCG5063B1ZU	
		Notes:		
Canada	Canada	POC-HUB	Group e-mail: scldorvalairexport@dbschenker.com Group tel: +1 514 633 2520 POC DBSchenker HUB YUL: 1. Rhonda frangella Rhonda.frangella@dbschenker.com	



4.6 Ship from: Europe Region, except from United Kingdom.

For Shipping Instructions ex Europe except from United Kingdom.

Origin	Supplier Location	Final Dest./ Incoterm	Bill to address	Ship to Address
Europe except UK	Europe except UK	FE-NL Incoterm: DAP(H'heide) or DDU(H'heide)	Fokker Elmo B.V. (Attn. Finance Department) PO Box 75 4630 AB Hoogerheide The Netherlands Email to: invoices.fenl@fokker.com	Fokker Elmo B.V. Netherlands Aviolandalaan 33 4631 RP Hoogerheide The Netherlands
		Notes:	BTW/VAT of Fokker Elmo is required: NL863223084B01.	
Europe except UK	Europe except UK	FE-NL Incoterm: FCA(suppliers) or FCA(Hub)	Fokker Elmo B.V. (Attn. Finance Department) PO Box 75 4630 AB Hoogerheide The Netherlands Email to: invoices.fenl@fokker.com	<i>(Direct delivery by TNT or Fedex to)</i> Fokker Elmo B.V. Netherlands Aviolandalaan 33 4631 RP Hoogerheide The Netherlands
		Notes:	For Dangerous Goods (DG) see POC-HUB notes.	
Europe except UK	Europe except UK	FE-CN Incoterm: all	Fokker Elmo B.V. (Attn. Finance Department) PO Box 62 4630 AB Hoogerheide The Netherlands Email to: invoices.fecnl@fokker.com	Fokker Elmo China Co.Ltd. c/o DBSchenker Internat. B.V. Fokkerweg 300 1438 AN Oudemeer The Netherlands
		Notes:	– Use plastic or "treated" (IPPC) pallets for all cargo with final destination FE-CN. For more information ask your POC at FE.	
Europe except UK	Europe except UK	FE-TR Incoterm: all	Fokker Elmo Havacilik Sanayi ve Ticaret Limited Sirketi Allowed abbreviation: Fokker Elmo Hav.San.ve Tic.Ltd.Sti Ege Serbest Bölgesi, Sadi Sokak No: 10 35410 Gaziemir – Izmir Turkey E-mail to: invoices.fetr@fokker.com Tax ID: 388 059 2095	Fokker Elmo Hav.San.ve Tic.Ltd.Sti Aegean Free Zone, Turkey c/o DBSchenker Internat. B.V. Fokkerweg 300 1438 AN Oudemeer, The Netherlands
		Notes:	– Always provide (Commercial) Invoice. For custom purposes a pro-forma invoice is NOT allowed. – Turkey has very strict custom regulations. Even a typing error can result into a blocked shipment. Please be very accurate with preparing the documentation.	
Europe except UK	Europe except UK	FE-IN Incoterms: all	GKN Fokker Elmo India Pvt. Ltd Block G, Embassy Industrial Park, Plot no.A-79 MIDC Chakan Industrial Area, Phase II Pune, Maharashtra, 401501 India Email to: Shailesh.bhalerao@fokker.com Tax ID# 27AAHCG5063B1ZU	GKN Fokker Elmo India Pvt. Ltd. Pune c/o DBSchenker International B.V. Fokkerweg 300 1438 AN Oudemeer, The Netherlands
		Notes:	Deliveries to Fokker Elmo Netherlands: Ship by TNT/Fedex, required instructions on request. Other Fokker Elmo destinations: Pick Up request by e-mail: nl.sm.ams.aerospace@dbschenker.com	
		Dangerous Goods:	Hazardous Material by FCA(Hub AMS) suppliers: A: Pre-advise Schenker AOG (nl.sm.ams.aog.nl@dbschenker.com) who will approve the delivery only to the address below. B: The shipment should be accompanied by a Dangerous Goods (DG) certificate. Address for hazardous material: PMT, Gevaarlijke stoffen, Controle van Vracht, Beveiliging Tupolevlaan 32 1119 NZ Schiphol-Rijk Tel: +31 (0) 20 653 1133	
		Export Controlled parts:	Deliver Export Controlled parts separately with a copy of the related Export License. It is allowed to label the shipments with the final Fokker Elmo destination address as "ship to" address if it is required by the Export license. Shipping via DBSchenker AMS.	
Europe except UK	Europe except UK	POC-HUB	POC DBSchenker HUB AMS: 1. Kitty Cheung Tel: +31 (0) 20 5000 564 Kitty.Cheung@dbschenker.com 2. Key Account Coordinator: Santosh Ramdin Tel: +31 (0) 20 5000 058 santosh.ramdin@dbschenker.com	Jeroen.delange@dbschenker.com Cooperated Account Manager: 3.Jeroen de Lange Tel: +31 (6) 6 1096 8370 Jeroen.delange@dbschenker.com

4.7 Ship from: United Kingdom Region

For Shipping Instructions ex United Kingdom.

Origin	Supplier Location	Final Destination	Bill to address	Ship to Address
UK	United Kingdom	FE-NL Incoterm: DAP(H'heide) or DDU(H'heide)	Fokker Elmo B.V. (Attn. Finance Department) PO Box 75 4630 AB Hoogerheide The Netherlands	Fokker Elmo B.V. Netherlands Aviolandalaan 33 4631 RP Hoogerheide The Netherlands
		Email to:	invoices.fenl@fokker.com	
		Notes:	For Dangerous Goods (DG) see POC-HUB notes.	
UK	United Kingdom	FE-NL Incoterm: FCA(suppliers) or FCA(Hub)	Fokker Elmo B.V. (Attn. Finance Department) PO Box 75 4630 AB Hoogerheide The Netherlands	<i>(Direct delivery by TNT or Fedex to)</i> Fokker Elmo B.V. Netherlands Aviolandalaan 33 4631 RP Hoogerheide The Netherlands
		Email to:	invoices.fenl@fokker.com	
		Notes:	For Dangerous Goods (DG) see POC-HUB notes.	
UK	United Kingdom	FE-CN Incoterm: all	Fokker Elmo B.V. (Attn. Finance Department) PO Box 62 4630 AB Hoogerheide The Netherlands	Fokker Elmo China Co.Ltd. c/o DBSchenker Internat. B.V. c/o DBSchenker LTD Schenker House, LHR portal, Scylla Rd. LHR Airport, Hounslow TW6 3FE, United Kingdom
		Email to:	invoices.fecn@fokker.com	
		Notes:	- Use plastic or "treated" (IPPC) pallets for all cargo with final destination FE-CN. For more information ask your POC at FE.	
UK	United Kingdom	FE-TR Incoterm: all	Fokker Elmo Havacilik Sanayi ve Ticaret Limited Sirketi Allowed abbreviation: Fokker Elmo Hav.San.ve Tic.Ltd.Sti Ege Serbest Bölgesi, Sadi Sokak No: 10 35410 Gaziemir – Izmir Turkey	Fokker Elmo Hav.San.ve Tic.Ltd.Sti Aegean Free Zone, Turkey c/o DBSchenker LTD Schenker House, LHR portal, Scylla Rd. LHR Airport, Hounslow TW6 3FE, United Kingdom
		E-mail to:	invoices.fetr@fokker.com	
		Tax ID:	388 059 2095	
		Notes:	- Always provide (Commercial) Invoice. For custom purposes a pro-forma invoice is NOT allowed. - Turkey has very strict custom regulations. Even a typing error can result into a blocked shipment. Please be very accurate with preparing the documentation.	
Europe except UK	United Kingdom	FE-IN Incoterms: all	GKN Fokker Elmo India Pvt. Ltd Block G, Embassy Industrial Park, Plot no.A-79 MIDC Chakan Industrial Area, Phase II Pune, Maharashtra, 401501 India	GKN Fokker Elmo India Pvt. Ltd. Pune c/o DBSchenker LTD Schenker House, LHR portal, Scylla Rd. LHR Airport, Hounslow TW6 3FE, United Kingdom
		Email to:	Shailesh.bhalerao@fokker.com	
		Tax ID#	27AAHCG5063B1ZU	
		Notes:		
UK	United Kingdom		Deliveries to Fokker Elmo Netherlands: Ship by TNT/Fedex, required instructions on request. Other Fokker Elmo destinations: Pick Up request by e-mail before 12:00 o'clock – Pick up same working day, else next working day: aerospace.lhexports@dbschenker.com	
		Export Controlled parts:	Deliver Export Controlled parts separately with a copy of the related Export License. It is allowed to label the shipments with the final Fokker Elmo destination address as "ship to" address if it is required by the Export license. Shipping via DBSchenker LHR.	
UK	UK	PoC-HUB	E-Mail Exports operator: gb.sm.lon.aerospace-lhr-exports@dbschenker.com POC DBSchenker HUB LHR: 1. Louise Roderick Tel: +44 (0) 208 831 4793 Louise.roderick@dbschenker.com	Client Service Manager 2. Mike Burrell Tel: +44 (0) 208 831 4804 mike.burrell@dbschenker.com

4.8 Ship from: India

For Shipping Instructions ex India

Origin	Supplier Location	Final Destination	Bill to address	Ship to Address
India	India	FE-NL Incoterm: all	Fokker Elmo B.V. (Attn. Finance Department) PO Box 75 4630 AB Hoogerheide The Netherlands	Fokker Elmo B.V. Netherlands c/o BVM Storage Solutions Pvt Ltd #77/10, Palekamma Nagar Behind Decathlon Chikkajala Bangalore 562157
		Email to:	invoices.fenl@fokker.com	
		Notes:		
India	India	FE-CN Incoterm: all	Fokker Elmo B.V. (Attn. Finance Department) PO Box 62 4630 AB Hoogerheide The Netherlands	Fokker Elmo (langfang) Electrical Systems Co. Ltd. c/o BVM Storage Solutions Pvt Ltd #77/10, Palekamma Nagar Behind Decathlon Chikkajala Bangalore 562157
		Email to:	invoices.fecn@fokker.com	
		Notes:	- Use plastic or "treated" (IPPC) pallets for all cargo with final destination FE-CN. For more information ask your POC at FE.	
India	India	FE-TR Incoterm: all	Fokker Elmo Havacılık Sanayi ve Ticaret Limited Şirketi Allowed abbreviation: Fokker Elmo Hav.San.ve Tic.Ltd.Sti Ege Serbest Bölgesi, Sadi Sokak No: 10 35410 Gaziemir – Izmir Turkey	Fokker Elmo Havacılık Sanayi ve Ticaret Limited Şirketi c/o BVM Storage Solutions Pvt Ltd #77/10, Palekamma Nagar Behind Decathlon Chikkajala Bangalore 562157
		E-mail to:	invoices.fetr@fokker.com	
		Tax ID:	388 059 2095	
		Notes:	- Always provide (Commercial) Invoice. For custom purposes a pro-forma invoice is NOT allowed. - Turkey has very strict custom regulations. Even a typing error can result into a blocked shipment. Please be very accurate with preparing the documentation.	
India	India	FE-IN Incoterms: all	GKN Fokker Elmo India Pvt. Ltd Block G, Embassy Industrial Park, Plot no.A-79 MIDC Chakan Industrial Area, Phase II Pune, Maharashtra, 401501 India	GKN Fokker Elmo India Pvt. Ltd c/o BVM Storage Solutions Pvt Ltd #77/10, Palekamma Nagar Behind Decathlon Chikkajala Bangalore 562157
		Email to:	Shailesh.bhalerao@fokker.com	
		Tax ID#	27AAHCG5063B1ZU	
		Notes:		
India	I	PoC-HUB MOM	POC DBSchenker HUB MOM: 1. Sreejith kk Key account manager Tel: +91 (0) 9790799212 Sreejith.kk@dbschenker.com	2. Bharat Rawool Tel: +91 (0) 9029429000 Senior Executive Air Export bharat.rawool@dbschenker.com

4.9 Ship from: Origins, not mentioned in 4.1 – 4.8

For Shipping Instructions ex other Origins = direct shipment

Origin	Supplier Location	Final Destination	Bill to address	Ship to Address
US	Region: -DFW -Ireland	FE-NL Incoterm: all	Fokker Elmo B.V. (Attn. Finance Department) PO Box 75 4630 AB Hoogerheide The Netherlands	Fokker Elmo B.V. Netherlands Aviolandalaan 33 4631 RP Hoogerheide The Netherlands
		Email to:	invoices.fenl@fokker.com	
		Notes:		
US	Region: -DFW -Ireland	FE-CN Incoterm: all	Fokker Elmo B.V. (Attn. Finance Department) PO Box 62 4630 AB Hoogerheide The Netherlands	Fokker Elmo (langfang) Electrical Systems Co. Ltd. #3 Workshop, No.28 No.2 Road Langfang Economic and Technical Development Zone Langfang 065001 Hebei, China
		Email to:	invoices.fecn@fokker.com	
		Notes:	– Use plastic or "treated" (IPPC) pallets for all cargo with final destination FE-CN. For more information ask your POC at FE.	
US	Region: -DFW -Ireland	FE-TR Incoterm: all	Fokker Elmo Havacılık Sanayi ve Ticaret Limited Şirketi Allowed abbreviation: Fokker Elmo Hav.San.ve Tic.Ltd.Şti Ege Serbest Bölgesi, Sadi Sokak No: 10 35410 Gaziemir – Izmir Turkey	Fokker Elmo Havacılık Sanayi ve Ticaret Limited Şirketi Allowed abbreviation: Fokker Elmo Hav.San.ve Tic.Ltd.Şti Ege Serbest Bölgesi, Sadi Sokak No: 10 35410 Gaziemir – Izmir, Turkey
		E-mail to:	invoices.fetr@fokker.com	
		Tax ID:	388 059 2095	
		Notes:	– Always provide (Commercial) Invoice. For custom purposes a pro-forma invoice is NOT allowed. – Turkey has very strict custom regulations. Even a typing error can result into a blocked shipment. Please be very accurate with preparing the documentation.	
US	Region: -DFW -Ireland	FE-IN Incoterms: all	GKN Fokker Elmo India Pvt. Ltd Block G, Embassy Industrial Park, Plot no.A-79 MIDC Chakan Industrial Area, Phase II Pune, Maharashtra, 401501 India	GKN Fokker Elmo India Pvt. Ltd Block G, Embassy Industrial Park, Plot no.A-79 MIDC Chakan Industrial Area, Phase II Pune, Maharashtra, 401501 India
		Email to:	Shailesh.bhalerao@fokker.com	
		Tax ID#	27AAHCG5063B1ZU	
		Notes:		
US	Region: -DFW -Ireland		1. If Weight < 50 Kg: Create Shipment at Fedex/TNT 2. If Weight > 50 Kg: Contact local DBSchenker branch	

Delivery Instructions for Fokker Elmo Suppliers Worldwide

5 AIRCRAFT ON GROUND (AOG) / EXPRESS SHIPMENTS (CRITICLE OR SINGLE)

For those urgent shipments on the account of Fokker Elmo, a written approval from Fokker Elmo is required.

Origin	Supplier Location	Final Destination	Bill to address	Ship to Address
All	All	FE-NL Incoterm: all	Fokker Elmo B.V. (Attn. Finance Department) PO Box 75 4630 AB Hoogerheide The Netherlands	Fokker Elmo B.V. Aviolandalaan 33 4631 RP Hoogerheide The Netherlands
		Email to:	invoices.fenl@fokker.com	
		Notes:	For Dangerous Goods (DG) see POC-HUB notes.	
All	All	FE-CN Incoterm: all	Fokker Elmo B.V. (Attn. Finance Department) PO Box 62 4630 AB Hoogerheide The Netherlands	Fokker Elmo (langfang) Electrical Systems Co. Ltd. #3 Workshop, No.28 No.2 Road Langfang Economic and Technical Development Zone Langfang 065001 Hebei, China
		Email to:	invoices.fecn@fokker.com	
		Notes:	- Use plastic or "treated" (IPPC) pallets for all cargo with final destination FE-CN. For more information ask your POC at FE.	
All	All	FE-TR Incoterm: all	Fokker Elmo Havacılık Sanayi ve Ticaret Limited Şirketi Allowed abbreviation: Fokker Elmo Hav.San.ve Tic.Ltd.Şti Ege Serbest Bölgesi, Sadi Sokak No: 10 35410 Gaziemir – Izmir Turkey	Fokker Elmo Havacılık Sanayi ve Ticaret Limited Şirketi Allowed abbreviation: Fokker Elmo Hav.San.ve Tic.Ltd.Şti Ege Serbest Bölgesi, Sadi Sokak No: 10 35410 Gaziemir – Izmir, Turkey
		E-mail to:	invoices.fetr@fokker.com	
		Tax ID:	388 059 2095	
		Notes:	- Always provide (Commercial) Invoice. For custom purposes a pro-forma invoice is NOT allowed. - Turkey has very strict custom regulations. Even a typing error can result into a blocked shipment. Please be very accurate with preparing the documentation.	
All	All	FE-IN Incoterms: all	GKN Fokker Elmo India Pvt. Ltd Block G, Embassy Industrial Park, Plot no.A-79 MIDC Chakan Industrial Area, Phase II Pune, Maharashtra, 401501 India	GKN Fokker Elmo India Pvt. Ltd Block G, Embassy Industrial Park, Plot no.A-79 MIDC Chakan Industrial Area, Phase II Pune, Maharashtra, 401501 India
		Email to:	Shailesh.bhalerao@fokker.com	
		Tax ID#	27AAHCG5063B1ZU	
		Notes:		
All	All	POC-AOG Express	For AOG shipments on the account of Fokker Elmo, a written approval from Fokker Elmo is required! Follow instructions of Fokker Elmo employee 3. If Weight < 50 Kg: Create Shipment at Fedex/TNT 4. If Weight > 50 Kg: POC DBSchenker AOG desks: DBSchenker AOG desk – Amsterdam (Global Control Tower) Tel: +31 (0) 20 5000 070 (business hours) Tel: +31 (0) 6 2266 4409 (outside business hours) nl.sm.ams.aog@dbschenker.com (For shipments ex US add MIA desk as well due to time zone) DBSchenker AOG desk - USA Tel: +1 866 890 1235 us.sm.mia.aog-usa@dbschenker.com	

Delivery Instructions for Fokker Elmo Suppliers Worldwide

6 COMMUNICATION MATRIX FOR GLOBAL TRANSPORT

Communication Matrix	Point of Contact	Escalation
Fokker Elmo Netherlands (FE-NL)	<p>INBOUND: Function: Sr. Employee Incoming Goods Name: Lenny Bolders Tel: +31 (0) 164 617698 e-mail: lenny.bolders@fokker.com</p> <p>OUTBOUND: Function: Sr. Employee Expedition Name: Bram van Poortvliet Tel: +31 (0) 164 617723 e-mail: bram.vanpoortvliet@fokker.com</p>	<p>Function: SCM Manager Name: Evert Jan Wisse Tel: +31 (0) 164 617856 e-mail: evertjan.wisse@fokker.com</p> <p>Function: Procurement Manager Name: Kevin Koevoets Tel: +31 (0) 164 617792 e-mail: kevin.koevoets@fokker.com</p>
Fokker Elmo China (FE-CN)	<p>INBOUND: Function: Import Specialist Name: Ge Hui Tel: +86 (0) 316 5978 570 e-mail: ge.hui@fokker.com</p> <p>OUTBOUND: Function: Export Specialist Name: Zhou Yanling Tel: +86 (0) 316 5978 652 e-mail: zhou.yanling@fokker.com</p>	<p>Function: ImpEx Supervisor Name: Zhang Qi Tel: +86 (0) 3165978 653 e-mail: zhang.qi@fokker.com</p> <p>Function: SCM Manager Name: Wen Chunjia (Vivian) Tel: +86 (0) 316 5978 609 e-mail: wen.chunjia@fokker.com</p> <p>Function: Procurement Manager Name: Hui Gang Tel: + 86 (0) 316 597 8671 e-mail: hui.gang@fokker.com</p>
Fokker Elmo Turkey (FE-TR)	<p>INBOUND & OUTBOUND Function: Supervisor Import & Export Name: Canan ABALI Tel: +90 (0) 232-258 0141 e-mail: canan.abali@fokker.com</p>	<p>Function: SCM Manager Name: Emre Demir Tel: +90 (0) 531 697 9805 e-mail: Emre.Demir@fokker.com</p> <p>Function: Procurement Manager Name: Fevziye Yilmaz Salman Tel: +90 (0) 2322580141 e-mail: fevziye.yilmaz@fokker.com</p>
Fokker Elmo Pune India (FE-IN)	<p>INBOUND & OUTBOUND Function: Procurem. Ops Manager Name: Yogesh Yadav Tel: +91 (0) 2135636915 e-mail: yogesh.yadav@fokker.com</p>	<p>Function: SCM Manager Name: Varsha Ghule Tel: +91 (0) 2135636916 e-mail: Varsha.ghule@fokker.com</p>
DB Schenker	See page related Shipping Instructions.	
Fokker Elmo Head Quarter	<p>Function: Sr. Buyer (Transport Management) Name: John de Laater Tel: +31 (0) 6 23718760 e-mail: john.delaaater@fokker.com</p>	<p>Function: EWIS Procurement Director Name: Ingmar Krijger Tel: +31 (0) 6 51234571 e-mail: ingmar.krijger@fokker.com</p>